

2017

C&S Supply

QUALITY AFFORDABLE PRODUCTS



New High-Viz™!

888-663-4966

Table of Contents

VIPER NOZZLES	Page
Select Gallonage.....	4-5
Blue Devil Select.....	6-7
Constant Gallonage	8-9
Automatic.....	10-11
Industrial	12-13
Foam Equipment	14-15

NOZZLES

Ball Shutoffs.....	16-17
Small Dual Range Tips	18
Small Constant Flow Tips.....	19
Smooth Bores and Stacked Tips	20
Piercing Nozzle	21
Smooth Bore Combos & CAFS.....	22
Combo “Break-Apart” Nozzles	23

FORESTRY PRODUCTS

Wildland Equipment.....	24
Hose Coilers	25
GENFO Water Backpacks	26
Drip Torch	27
Foam Gun Proportioner	28
High-Viz™ (High Visibility Products)	29

WATERFLOW ACCESSORIES

Wye Valves.....	30-31
Hydrant Accessories	32
Hose Handler High-Rise Pack	33
Brass Ball Valves/Strainers	34
Adapters & Reducers.....	35

Repair Parts

VIPER Repair Parts.....	36-37
-------------------------	-------

TECHNICAL DATA

Flow Data.....	38-40
Cross Reference.....	41-42
Viper Valve Diagram/Maintenance	43-44
Nozzle Selling Basics	45-46
Ordering and Warranty	47

2017 Featured Products

High-Viz™



Hello,

The background to High Visibility products is from my experience as a wildland firefighter. I was on a type II crew which was often tasked with mop-up.

I wanted to reduce some of the hazards I experienced during mop-up. When working a wildland fire one often follows the line, which is where T-valves and wyes like to hide. I have tripped over more T-Valves and leader wyes than you can shake a stick at. The problem is that their color blends into the black. After multiple days on the same fire we just aren't as sharp as we should be. No longer!

With C & S High Viz™ products a firefighter can easily see their water flow accessories and avoid the tripping hazard. Even during night ops, thanks to our ORALITE® reflective tape, the High Viz™ products jump out. The second problem I wanted to solve was finding these items inside of cabinetry. During first response, a firefighter is challenged with finding exactly the right tool without delay. Unfortunately, many engines are restocked in a haphazard manner, especially during a busy season. With C & S High Viz™ Wildland products a firefighter can more easily see exactly what they are looking for.



Chris Willis

Director of Sales & Marketing



CSsupplyinc.com

VIPER - SELECT GALLONAGE

High performance nozzles with select flows

SG1560

High quality, high performance nozzle with flows from 15 to 60 GPM. 1" Select Gallonage nozzle with ball shutoff and pistol grip.



Features and Specifications:

- Nozzles are extruded with E-LITE alloy
- Hard-coated for corrosion protection and durability
- The Spinning Teeth offer a wide, complete coverage fog pattern
- Pistol Grip is comfortable and durable
- Selection ring has 4 flow positions without pattern change
- Viper Select Gallonage offers constant gallonage in all positions
- 15-30-50-60 GPM @ 100 psi (50 psi and 75 psi options available)
- FLUSH without shutting down
- 1" swivel inlet NST or NPSH threads

Wt: 3.44 lbs. Length: 7.87"



Available as 1.5" NST tip
SG1560TIPONLY



Available without pistol grip:
SG1560NPG

SG3012

Our most versatile and popular nozzle. Flows from 30 to 125 GPM. 1.5" Select Gallonage nozzle with ball shutoff and pistol grip.



Features and Specifications:

- Nozzles are extruded with E-LITE alloy
- Hard-coated for corrosion protection and durability
- The Spinning Teeth offer a wide, complete coverage fog pattern
- Pistol Grip is comfortable and durable
- Selection ring has 4 flow positions without pattern change
- Viper Select Gallonage offers constant gallonage in all positions
- 30-60-95-125 GPM @ 100 psi (50 psi and 75 psi options available)
- FLUSH without shutting down
- 1.5" swivel inlet NST or NPSH threads

Wt: 4.5 lbs. Length: 8.85"



Available as 1.5" NST tip
SG3012TIPONLY



Available without pistol grip:
SG3012NPG

SG7515

Ideal for municipal and industrial applications. Flows from 75 to 150 GPM. 1.5" Select Gallonage nozzle with ball shutoff and pistol grip.



Features and Specifications:

- Nozzles are extruded with E-LITE alloy
- Hard-coated for corrosion protection and durability
- The Spinning Teeth offer a wide, complete coverage fog pattern
- Pistol Grip is comfortable and durable
- Selection ring has 4 flow positions without pattern change
- Viper Select Gallonage offers constant gallonage in all positions
- 75-100-125-150 GPM @ 100 psi (75 psi option available)
- FLUSH without shutting down
- 1.5" swivel inlet NST or NPSH threads

Wt: 4.5 lbs. Length: 8.85"



Available as 1.5" NST tip
SG7515TIPONLY



Available without pistol grip:
SG7515NPG

VIPER - SELECT GALLONAGE

High performance nozzles with select flows

SG9520 1.5"

High quality, high performance nozzle with flows from 95 to 200 GPM. 1.5" or 2.5" Select Gallonage nozzle with ball shutoff and pistol grip.



Features and Specifications:

- Nozzles are extruded with E-LITE alloy
- Hard-coated for corrosion protection and durability
- The Spinning Teeth offer a wide, complete coverage fog pattern
- Pistol Grip is comfortable and durable
- Selection ring has 4 flow positions without pattern change
- Viper Select Gallonage offers constant gallonage in all positions
- 95-125-150-200 GPM @ 100 psi (50 psi and 75 psi options available)
- FLUSH without shutting down
- Swivel inlet 1.5" NST or NPSH or 2.5" NST ONLY threads

Wt: 7 lbs. Length: 11.2"

SG9520 2.5"



Wt: 7.5 lbs. Length: 12.8"



Available without pistol grip:
SG9520NPG 1.5



Available as 1.5" NST tip
SG9520TIPONLY



Available without pistol grip:
SG9520NPG 2.5"

SG12250 2.5"

Ideal for municipal and industrial applications, where higher flow is needed. Flows from 125 to 250 GPM. 2.5" or 1.5" Select Gallonage nozzle with ball shutoff and pistol grip.



Features and Specifications:

- Nozzles are extruded with E-LITE alloy
- Hard-coated for corrosion protection and durability
- The Spinning Teeth offer a wide, complete coverage fog pattern
- Pistol Grip is comfortable and durable
- Selection ring has 4 flow positions without pattern change
- Viper Select Gallonage offers constant gallonage in all positions
- 125-150-200-250 GPM @ 100 psi (75 psi option available)
- FLUSH without shutting down
- Swivel inlet 1.5" NST or NPSH or 2.5" NST ONLY threads

Wt: 7.5 lbs. Length: 12.8"



Wt: 7 lbs. Length: 11.2"



Available without pistol grip:
SG12250NPG 2.5"



Available as 1.5" NST tip
SG12250TIPONLY



Available without pistol grip:
SG12250NPG 1.5"

VIPER - SELECT GALLONAGE

High performance nozzles with select flows



BD550 (replaced BDS752)
5-10-25-50 GPM @ 100PSI
1" Swivel



Wt: 3.6 lbs. Length: 8.5"

BD1560
15-30-50-60 GPM @ 100PSI
1" Swivel



Wt: 3.6 lbs. Length: 8.5"

Features and Specifications

- NFPA 1964 compliant (EN 15182-4 TYPE 3 certified)
- New 90 degree rotation from 30 degree fog to straight stream (one twist of the hand)
- Raised lug indicators on the selector and fog barrels for easier pattern and flow identification
- No teeth to break - Rylostatic teeth in the nozzle head to break up the water but not cause fingers in the stream like traditional fixed teeth
- Metal ball with front and rear seals to work under higher pressures (max 580psi)
- Deeper ribs in selector ring for better grip
- 4 or 5 setting selection ring without pattern change
- FLUSH without shutting down
- Constant flow through fog and straight stream
- Standard operating pressure @ 100 psi (75psi and 50psi operating pressures available as well)
- Swivel inlet 1" and 1.5" NST or NPSH threads. (2.5" threads NST ONLY)

BD3012
30-60-95-125 GPM @ 100PSI
1.5" Swivel



Wt: 4.2 lbs. Length: 9.88"

BD3015
30-60-95-125-150 GPM @ 100PSI
1.5" Swivel



Wt: 4.2 lbs. Length: 9.88"

BD7515
75-100-125-150 GPM @ 100PSI
1.5" Swivel



Wt: 4.2 lbs. Length: 9.88"

VIPER - SELECT GALLONAGE

High performance nozzles with select flows



BD9520 1.5"

95-125-150-200 GPM @ 100PSI

1.5" Swivel



Wt: 6.8 lbs. Length: 11"

BD9520 2.5"

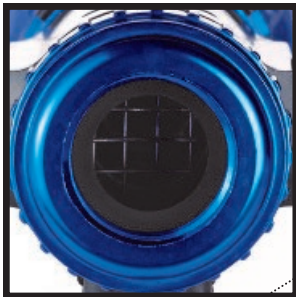
95-125-150-200 GPM @ 100PSI

2.5" Swivel



Wt: 7.8 lbs. Length: 12.75"

Metal Ball



Inlet Screen

Indicator Lugs



**One turn of the
hand from fog
to straight
stream**



Rylostatic Teeth

BD12250 1.5"

125-150-200-250 GPM @ 100PSI

1.5" Swivel



Wt: 6.8lbs. Length: 11"

BD12250 2.5"

125-150-200-250 GPM @ 100PSI

2.5" Swivel



Wt: 7.8 lbs. Length: 12.75"

VIPER - CONSTANT GALLONAGE

Heavy-duty, professional constant flow nozzles

CG1550

Great all-around industrial or forestry nozzle. 1" Constant Flow nozzle 30 or 40 GPM with ball shutoff and pistol grip.

Features and Specifications:

- Nozzles are extruded with E-LITE alloy
- Hard-coated for corrosion protection and durability
- Constant flow through fog and straight stream
- BIMATIC flush system allows flush without shutting down
- The Spinning Teeth offer a wide, complete coverage fog pattern
- Pistol Grip is comfortable and durable
- Constant Flow- 30 GPM @ 100 psi (Standard)
- 1" swivel inlet NST or NPSH threads

Wt: 3.5 lbs. Length: 9.25"



Available as 1.5" NST tip

CG1550TIPONLY

Available Flow Configurations

CG1550	30GPM	40GPM
100PSI	•	•
75PSI	N/A	N/A
50PSI	N/A	N/A



Available without pistol grip:

CG1550NPG

CG2510

Versatile nozzle, good for many applications. 1.5" Constant Flow nozzle 60 or 95 GPM with ball shutoff and pistol grip.

Features and Specifications:

- Nozzles are extruded with E-LITE alloy
- Hard-coated for corrosion protection and durability
- Constant flow through fog and straight stream
- BIMATIC flush system allows flush without shutting down
- The Spinning Teeth offer a wide, complete coverage fog pattern
- Pistol Grip is comfortable and durable
- Constant Flow- 95 GPM @ 100 psi (Standard)
- 1.5" swivel inlet NST or NPSH threads

Wt: 4 lbs. Length: 9.84"



Available as 1.5" NST tip

CG2510TIPONLY

Available Flow Configurations

CG2510	60 GPM	95 GPM
100PSI	•	•
75PSI	•	•
50PSI	•	•



Available without pistol grip:

CG2510NPG

CG5016

Versatile nozzle, good for many applications. 1.5" Constant Flow nozzle 125 or 150 GPM with ball shutoff and pistol grip.

Features and Specifications:

- Nozzles are extruded with E-LITE alloy
- Hard-coated for corrosion protection and durability
- Constant flow through fog and straight stream
- BIMATIC flush system allows flush without shutting down
- The Spinning Teeth offer a wide, complete coverage fog pattern
- Pistol Grip is comfortable and durable
- Constant Flow- 125 GPM @ 100 psi (Standard)
- 1.5" swivel inlet NST or NPSH threads

Wt: 4 lbs. Length: 9.84"



Available as 1.5" NST tip

CG5016TIPONLY

Available Flow Configurations

CG5016	125 GPM	150GPM
100PSI	•	•
75PSI	•	N/A
50PSI	•	N/A



Available without pistol grip:

CG5016NPG

VIPER - CONSTANT GALLONAGE

Heavy-duty, professional constant flow nozzles

CG8020 1.5"

Ideal for municipal and industrial applications, where higher flow is needed. 1.5" Constant Flow nozzle 150, 175, 200 or 250 GPM with ball shutoff and pistol grip.



Available without pistol grip:
CG8020NPG 1.5"

Features and Specifications:

- Nozzles are extruded with E-LITE alloy
- Hard-coated for corrosion protection and durability
- Constant flow through fog and straight stream
- BIMATIC flush system allows flush without shutting down
- The Spinning Teeth offer a wide, complete coverage fog pattern
- Pistol Grip is comfortable and durable
- Constant Flow– 200 GPM @ 100 psi (Standard)
- 1.5" swivel inlet NST or NPSH threads

Wt: 6.5 lbs. Length: 11.2"



Available as 1.5" NST tip
CG8020TIPONLY

Available Flow Configurations

CG8020	150 GPM	175 GPM	200 GPM	250 GPM
100PSI	•	•	•	•
75PSI	•	•	•	•
50PSI	•	•	•	N/A

CG8020 2.5"

Ideal for municipal and industrial applications, where higher flow is needed. 2.5" Constant Flow nozzle 150, 175, 200, or 250 GPM with ball shutoff and pistol grip.



Available without pistol grip:
CG8020NPG 2.5"

Features and Specifications:

- Nozzles are extruded with E-LITE alloy
- Hard-coated for corrosion protection and durability
- Constant flow through fog and straight stream
- BIMATIC flush system allows flush without shutting down
- The Spinning Teeth offer a wide, complete coverage fog pattern
- Pistol Grip is comfortable and durable
- Constant Flow– 200 GPM @ 100 psi (Standard)
- 2.5" swivel inlet NST threads ONLY

Wt: 7.5 lbs. Length: 13"



Available as 1.5" NST tip
CG8020TIPONLY

Available Flow Configurations

CG8020	150 GPM	175 GPM	200 GPM	250 GPM
100PSI	•	•	•	•
75PSI	•	•	•	•
50PSI	•	•	•	N/A

VBPP-CG8020

Ideal for municipal and industrial applications, where higher flow is needed. 2.5" Constant Flow nozzle 250 GPM with ball shutoff and playpipe.



Features and Specifications:

- Nozzles are extruded with E-LITE alloy
- Hard-coated for corrosion protection and durability
- Constant flow through fog and straight stream
- BIMATIC flush system allows flush without shutting down
- The Spinning Teeth offer a wide, complete coverage fog pattern
- Playpipe
- Constant Flow– 250 GPM @ 100 psi (Standard)
- 2.5" swivel inlet NST threads ONLY

Wt: 10 lbs. Length: 22"

CSsupplyinc.com

**SEE FLOW DATA
ABOVE**

VIPER - AUTOMATIC GALLONAGE

Automatic nozzles with modulated flows

FT1550

Large flow ranges at 100 psi at the nozzle. (50 psi and 75 psi operating pressures available) 1" Automatic nozzle flows 15 to 50 GPM with ball shutoff and pistol grip.



Features and Specifications:

- Nozzles are extruded with E-LITE alloy
- Hard-coated for corrosion protection and durability
- Constant flow through fog and straight stream
- BIMATIC flush system allows flush without shutting down
- The Spinning Teeth offer a wide, complete coverage fog pattern
- Pistol Grip is comfortable and durable
- Flow – 15 to 50 GPM
- 1" swivel inlet NST or NPSH threads

Wt: 4 lbs. Length: 9.25"



Available as 1.5" NST tip
FT1550TIPONLY



Available without pistol grip:
FT1550NPG

FT2510

Large flow ranges at 100 psi at the nozzle. (50 psi and 75 psi operating pressures available) 1.5" Automatic nozzle flows 25 to 100 GPM with ball shutoff and pistol grip.



Features and Specifications:

- Nozzles are extruded with E-LITE alloy
- Hard-coated for corrosion protection and durability
- Constant flow through fog and straight stream
- BIMATIC flush system allows flush without shutting down
- The Spinning Teeth offer a wide, complete coverage fog pattern
- Pistol Grip is comfortable and durable
- Flow – 25 to 100 GPM
- 1.5" swivel inlet NST or NPSH threads

Wt: 5 lbs. Length: 9.84"



Available as 1.5" NST tip
FT2510TIPONLY



Available without pistol grip:
FT2510NPG

FT5016

Large flow ranges at 100 psi at the nozzle. (75 psi operating pressure available) 1.5" Automatic nozzle flows 50 to 160 GPM with ball shutoff and pistol grip.



Features and Specifications:

- Nozzles are extruded with E-LITE alloy
- Hard-coated for corrosion protection and durability
- Constant flow through fog and straight stream
- BIMATIC flush system allows flush without shutting down
- The Spinning Teeth offer a wide, complete coverage fog pattern
- Pistol Grip is comfortable and durable
- Flow – 50 to 160 GPM
- 1.5" swivel inlet NST or NPSH threads

Wt: 5 lbs. Length: 9.84"



Available as 1.5" NST tip
FT5016TIPONLY



Available without pistol grip:
FT5016NPG

VIPER - AUTOMATIC GALLONAGE

Automatic nozzles with modulated flows

FT8020 1.5"

Large flow ranges at 100 psi at the nozzle. (50 psi and 75 psi operating pressures available) 1.5" or 2.5" Automatic nozzle flows 80 to 200 GPM with ball shutoff and pistol grip.

Features and Specifications:

- Nozzles are extruded with E-LITE alloy
- Hard-coated for corrosion protection and durability
- Constant flow through fog and straight stream
- BIMATIC flush system allows flush without shutting down
- The Spinning Teeth offer a wide, complete coverage fog pattern
- Pistol Grip is comfortable and durable
- Flow – 80 to 200 GPM
- 1.5" swivel inlet NST or NPSH threads or 2.5" swivel inlet NST ONLY



Wt: 6.5 lbs. Length: 11.2"

Wt: 7.5 lbs. Length: 13"



Available without pistol grip:
FT8020NPG 1.5"



Available as 1.5" NST tip
FT8020TIPONLY



Available without pistol grip:
FT8020NPG 2.5"

FT12250 1.5"

Large flow ranges at 100 psi at the nozzle. (75 psi operating pressure available) 2.5" or 1.5" Automatic nozzle flows 125 to 250 GPM with ball shutoff and pistol grip.

Features and Specifications:

- Nozzles are extruded with E-LITE alloy
- Hard-coated for corrosion protection and durability
- Constant flow through fog and straight stream
- BIMATIC flush system allows flush without shutting down
- The Spinning Teeth offer a wide, complete coverage fog pattern
- Pistol Grip is comfortable and durable
- Flow – 125 to 250 GPM
- 1.5" swivel inlet NST or NPSH threads or 2.5" swivel inlet NST ONLY



Wt: 6.5 lbs. Length: 11.2"

Wt: 7.5 lbs. Length: 13"



Available without pistol grip:
FT12250NPG 1.5"



Available as 1.5" NST tip
FT12250TIPONLY



Available without pistol grip:
FT12250NPG 2.5"

VIPER - INDUSTRIAL NOZZLES

Heavy-duty inexpensive nozzles

ST1530-PV

1" Constant Flow nozzle 30 GPM with ball shutoff and pistol grip.



Features and Specifications:

- Can be used as a break-apart
- Large protective rubber bumpers
- Tip twists to shut off
- Safe and durable (individually tested)
- Shutoff handles available in colors to match pre-connect lines: Black, Red, Yellow, Orange, Blue, Green
- 30 GPM @ 100 psi
- 1" swivel NST or NPSH
- Break-apart tip is 1" rigid base NST or NPSH

Wt: 3.5 lbs. Length: 9.45"

ST2510-PV

1 1/2" Constant Flow nozzle 95 GPM with ball shutoff and pistol grip.

Features and Specifications:

- Can be used as a break-apart (NST Model Only)
- Large protective rubber bumpers
- Tip twists to shut off
- Safe and durable (individually tested)
- Shutoff handles available in colors to match pre-connect lines: Black, Red, Yellow, Orange, Blue, Green
- 95 GPM @ 100 psi
- 1 1/2" swivel NST or NPSH
- Break-apart tip is 1 1/2" rigid base NST Only

Wt: 3.5 lbs. Length: 10.6"



ST5016-PV

1 1/2" Constant Flow nozzle 125 GPM with ball shutoff and pistol grip.



Features and Specifications:

- Can be used as a break-apart (NST Model Only)
- Large protective rubber bumpers
- Tip twists to shut off
- Safe and durable (individually tested)
- Shutoff handles available in colors to match pre-connect lines: Black, Red, Yellow, Orange, Blue, Green
- 125 GPM @ 100 psi
- 1 1/2" swivel NST or NPSH
- Break-apart tip is 1 1/2" rigid base NST Only

Wt: 3.5 lbs. Length: 10.6"

VIPER - INDUSTRIAL NOZZLES

Heavy-duty inexpensive nozzles

ST2510-PV 2.5"

2.5" Constant Flow nozzle 95 GPM with ball shutoff and pistol grip.

Features and Specifications:

- Can be used as a break-apart
- Large protective rubber bumpers
- Tip twists to shut off
- Safe and durable (individually tested)
- Shutoff handles available in colors to match pre-connect lines: Black, Red, Yellow, Orange, Blue, Green
- 95 GPM @ 100 psi
- 2.5" swivel NST Only
- Break-apart tip is 1.5" rigid base NST Only

Wt: 6.2 lbs. Length: 13.25"



ST5016-PV 2.5"

2.5" Constant Flow nozzle 125 GPM with ball shutoff and pistol grip.

Features and Specifications:

- Can be used as a break-apart
- Large protective rubber bumpers
- Tip twists to shut off
- Safe and durable (individually tested)
- Shutoff handles available in colors to match pre-connect lines: Black, Red, Yellow, Orange, Blue, Green
- 125 GPM @ 100 psi
- 2.5" swivel NST Only
- Break-apart tip is 1.5" rigid base NST Only

Wt: 6.2 lbs. Length: 13.25"



VTE1550-B

- Composite Nozzle
- 30 GPM Constant Flow
- 1" NST or NPSH

Wt: 1 lb. Length: 5"



ST2510-B TIP

- 95 GPM BRASS Constant Flow
- Spinning teeth
- 1.5" NST

Wt: 2.6 lb. Length: 5"



VTE2510

- Composite Nozzle
- 95 GPM Constant Flow
- 1.5" NST or NPSH

Wt: 1 lb. Length: 5"



Black Knight

- Fiberglass Reinforced Composite
- 95 GPM Constant Flow
- 1.5" NST or NPSH

Wt: 1 lb. Length: 5"



ST5016 TIP

- 125 GPM Constant Flow
- Spinning teeth
- 1.5" NST

Wt: 1 lb. Length: 5"



ST2510 TIP

- 95 GPM Constant Flow
- Spinning teeth
- 1.5" NST

Wt: 1 lb. Length: 5"



PORTABLE FOAM EQUIPMENT

Simple, Lightweight and Durable

BYPP1550-DIAL

Foam Eductor with Water Bypass & Metering Dial

- 30 GPM
- Utilizes the Inline Venturi System
- 48" pickup tube
- .5%, 1%, 3%, & 6% percentage metering dial
- Check-ball to prevent back flow into foam concentrate
- Fully tested with Viper SG and CG nozzles
- 1" rigid thread NST

Wt: 3.2 lbs. Length: 6.4"



BYPP1550

Foam Eductor with Single metering disc

- 3% & 6% discs included

Wt: 2.8 lbs.
Length: 6.4"



BYPP3012-DIAL

Foam Eductor with Water Bypass & Metering Dial

- 60 GPM
- Utilizes the Inline Venturi System
- 48" pickup tube
- .5%, 1%, 3%, & 6% percentage metering dial
- Check-ball to prevent back flow into foam concentrate
- Fully tested with Viper SG and CG nozzles
- 1.5" rigid thread NST

Wt: 3.2 lbs. Length: 6.4"



BYPP3012

Foam Eductor with Single metering disc

- 3% & 6% discs included

Wt: 2.8 lbs.
Length: 1"



BYPP7515-DIAL

Foam Eductor with Water Bypass & Metering Dial

- 95 GPM
- Utilizes the Inline Venturi System
- 48" pickup tube
- .5%, 1%, 3%, & 6% percentage metering dial
- Check-ball to prevent back flow into foam concentrate
- Fully tested with Viper SG and CG nozzles
- 1.5" rigid thread NST

Wt: 3.2 lbs. Length: 6.4"



BYPP7515

Foam Eductor with Single metering disc

- 3% & 6% discs included

Wt: 2.8 lbs.
Length: 1"

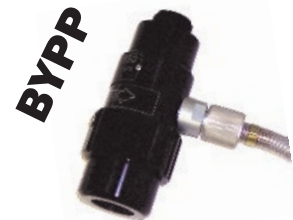


BYPP9520-DIAL

Foam Eductor with Water Bypass & Metering Dial

- 125 GPM
- Utilizes the Inline Venturi System
- 48" pickup tube
- .5%, 1%, 3%, & 6% percentage metering dial
- Check-ball to prevent back flow into foam concentrate
- Fully tested with Viper SG and CG nozzles
- 1.5" rigid thread NST

Wt: 3.2 lbs. Length: 6.4"



Truck



Hose

PORTABLE FOAM EQUIPMENT

Simple, Lightweight and Durable

VIPER Nozzle

PVB 1560

The complete foam nozzle

- 30 GPM
- 1" Swivel NST or NPSH
- Expansion rate from 8:1 to 12:1

Wt: 3 lbs. Length: 15.5"



Available without pistol grip:

PVB1560NPG

PVB 3012

The complete foam nozzle

- 60 GPM
- 1.5" Swivel NST or NPSH
- Expansion rate from 8:1 to 12:1

Wt: 3.5 lbs. Length: 19"



Available without pistol grip:

PVB3012NPG



Available as 1.5" NST tip

PVB3012TIPONLY

PVB 7515

The complete foam nozzle

- 95 GPM
- 1.5" Swivel NST or NPSH
- Expansion rate from 8:1 to 12:1

Wt: 3.5 lbs. Length: 19"



Available without pistol grip:

PVB7515NPG

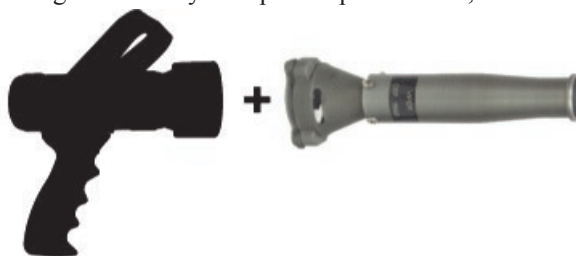


Available as 1.5" NST tip

PVB7515TIPONLY

CEP 1560

Foam tube designed to easily clamp on Viper SG1560, BD550 and BD1560



- Lightweight and easily attached
- Expansion rate from 8:1 to 12:1

Wt: 1 lb. Length: 12"

CEP 3012

Foam tube designed to easily clamp on Viper SG FT and CG nozzles



- Lightweight and easily attached
- For: SG3012 / SG7515 / SG9520
CG2510 / CG5016 / CG8020
FT2510 / FT5016 / FT8020
- Expansion rate from 8:1 to 12:1

Wt: 2 lbs. Length: 16"

BALL SHUTOFFS

Economical, Lightweight, Easy to Operate

VB1560

- Made of extruded E-Lite alloy and hard coated
- Light-weight and durable
- Quality polymer balls & seats and shutoff handles
- Smooth full 1" waterway
- Full time swivel
- Comfortable pistol grip
- 1" Swivel Fe. NST or NPSH x 1" M. NST or NPSH

Wt: 2.5 lbs.



Also Available with metal handle
VB1560-M



VB3012

- Made of extruded E-Lite alloy and hard coated
- Light-weight and durable
- Quality polymer balls & seats and shutoff handles
- Smooth full 1" waterway
- Full time swivel
- Comfortable pistol grip
- 1.5" Swivel Fe. NST or NPSH x 1.5" M. NST or NPSH

Wt: 2.5 lbs.



Also Available with metal handle
VB3012-M



VB9520

- Made of extruded E-Lite alloy and hard coated
- Light-weight and durable
- Quality polymer balls & seats and shutoff handles
- Smooth full 1 3/8" waterway
- Full time swivel
- Comfortable pistol grip
- 1.5" Swivel Fe. NST or NPSH x 1.5" M. NST or NPSH

Wt: 4 lbs.



Also Available without Pistol grip
VB9520NPG



VB9520 2.5"

- Made of extruded E-Lite alloy and hard coated
- Light-weight and durable
- Quality polymer balls & seats and shutoff handles
- Smooth full 1 3/8" waterway
- Full time swivel
- Comfortable pistol grip
- 2.5" Swivel Fe. NST x 1.5" M. NST or NPSH

Wt: 5 lbs.



Also Available without Pistol grip
VB9520NPG 2 1/2"



VBPP9520 2.5"

- Made of extruded E-Lite alloy and hard coated
- Light-weight and durable
- Quality polymer balls & seats and shutoff handles
- Smooth full 1 3/8" waterway
- Full time swivel
- Wrap around playpipe handles
- 2.5" Swivel Fe. NST x 1.5" M. NST

Wt: 5 lbs.



BALL SHUTOFFS

Economical, Lightweight, Easy to Operate

SBV10SS-M

- Made of hard coated Aluminum
- Light-weight and durable
- Quality polymer balls & seats
- Cast aluminum shutoff handle
- Smooth full 1" waterway
- 1" Swivel Fe. NST or NPSH x 1" M. NST or NPSH

Wt: 1.2 lbs.



SBV10SS

- Made of hard coated Aluminum
- Light-weight and durable
- Quality polymer balls & seats and shutoff handles
- Smooth full 1" waterway
- 1" Swivel Fe. NST or NPSH x 1" M. NST or NPSH

Wt: 1 lb.



SBV15SS-M

- Made of hard coated Aluminum
- Light-weight and durable
- Quality polymer balls & seats
- Cast aluminum shutoff handle
- Smooth full 1" waterway
- 1.5" Swivel Fe. NST or NPSH x 1.5" M. NST or NPSH

Wt: 1.2 lbs.



SBV15SS

- Made of hard coated Aluminum
- Light-weight and durable
- Quality polymer balls & seats and shutoff handles
- Smooth full 1" waterway
- 1.5" Swivel Fe. NST or NPSH x 1.5" M. NST or NPSH

Wt: 1.5 lbs.



SBV25SS

- Made of hard coated Aluminum
- Light-weight and durable
- Smooth 2 1/4" waterway
- Cast aluminum shutoff handle
- Quarter turn handle
- 2.5" Swivel Fe. NST x 2.5" M. NST

Wt: 4 lbs.



SMALL DUAL FLOW TIPS

Durable and Economical

- All C&S Nozzle Tips can be combined with a C&S Shutoff valve to make a custom 'Combo' nozzle
- Dual Flow Nozzles are constructed of hard anodized aluminum and stainless steel components
- Most come with a heavy duty rubber bumper for added protection (Exception: Bumperless models)
- Flow from 5 GPM to 90 GPM
- Ideal for firefighting and industrial uses
- Adjustable from fog to straight stream to off with twist shutoff
- (Dual flow nozzles starting from the off position twist to *Low Flow Straight Stream*, to *Low Flow Partial Fog*, to *High Flow Straight Stream* to *High Flow Fog*)

105/15

- NEW LOWER FLOW!
- 5 to 15 GPM Dual Flow
- 1" NST or NPSH

110/23

- 10 to 23 GPM Dual Flow
- 1" NST or NPSH

110/23 GHT

- 10 to 23 GPM Dual Flow
- 3/4" GHT



Wt: 1 lb. Length: 4"

1590/20

- 20 to 90 GPM Dual Flow
- 1.5" NST or NPSH

Wt: 1 lb. Length: 5"



SB-VIP-10

- Economy Special
- 'Good price for a good nozzle'
- 110/23BL (pictured above)
- VB1560 (page 16)
- 1" NST or NPSH

Wt: 2.5 lbs. Length: 7.5"



MD-1590/20

- 1560/20 (pictured above)
- MADD OG (page 19)
- 1.5" NST or NPSH

Wt: 1.2 lbs. Length: 7.5"



105/15BL

- NEW LOWER FLOW!
- 5 to 15 GPM Dual Flow
- 1" NST or NPSH

110/23BL

- 10 to 23 GPM Dual Flow
- 1" NST or NPSH

110/23BL GHT

- 10 to 23 GPM Dual Flow
- 3/4" GHT



Wt: 1 lb. Length: 4"

1560/20

- 20 to 60 GPM Dual Flow
- 1.5" NST or NPSH

Wt: 1 lb. Length: 5"



MD-110/23

- 110/23 (pictured above)
- MADD OG (page 19)
- 1" NST or NPSH

Wt: 1.2 lbs. Length: 7.5"



MD-1560/20

- 1590/20 (pictured above)
- MADD OG (page 19)
- 1.5" NST or NPSH

Wt: 1.2 lbs. Length: 7.5"



SMALL CONSTANT GALLONAGE TIPS

Durable and Economical

- All C&S Nozzle Tips can be combined with a C&S Shutoff valve to make a custom 'Combo' nozzle (see pg. 23)
- Ideal for firefighting and industrial uses
- Constant Flow Nozzles are constructed of hard anodized aluminum and stainless steel components
- Available in 15, 30, 60, and 100 GPM.
- Adjustable from fog to straight stream to off with twist shutoff

115

- NEW LOWER FLOW!
- 15 GPM Constant Flow
- 1" NST or NPSH

130

- 30 GPM Constant Flow
- 1" NST or NPSH

130 GHT

- 30 GPM Constant Flow
- 3/4" GHT

Wt: 1 lb. Length: 4"



115BL

- NEW LOWER FLOW!
- 15 GPM Constant Flow
- 1" NST or NPSH

130BL

- 30 GPM Constant Flow
- 1" NST or NPSH

130BL GHT

- 30 GPM Constant Flow
- 3/4" GHT

Wt: 1 lb. Length: 4"



15100

- 100 GPM Constant Flow
- 1.5" NST or NPSH

Wt: 1 lb. Length: 5"



1560

- 60 GPM Constant Flow
- 1.5" NST or NPSH

Wt: 1 lb. Length: 5"



MD-130

- 130 (pictured above)
- MADDOG (pictured right)
- 1" NST or NPSH

Wt: 1.2 lbs. Length: 7.5"



MADDDOG

- Low/Medium expansion foam tube
- Fits 105/15, 110/23, 1560/20, 1590/20, 115, 130, 1560, 15100. Can be added to VTE2510 and Black Knight if the bumper is removed.

Wt: 1 lb. Length: 4"



MD-1560

- 1560 (pictured above)
- MADDOG (pictured above)
- 1.5" NST or NPSH

Wt: 1.2 lbs. Length: 7.5"



MD-15100

- 15100 (pictured above)
- MADDOG (pictured above)
- 1.5" NST or NPSH

Wt: 1.2 lbs. Length: 7.5"



MD-BK

- BLACK KNIGHT (page 13)
- MADDOG (pictured above)
- 1.5" NST or NPSH

Wt: 1.2 lbs. Length: 8.25"



MD-VTE2510

- VTE2510 (page 13)
- MADDOG (pictured above)
- 1.5" NST or NPSH

Wt: 1.2 lbs. Length: 8.25"



SMOOTH BORES AND STACKED TIPS

The new standard in smooth bore nozzles



1" Smooth Bore features:

- Constructed of anodized aluminum
- Available in 1" NST and NPSH
- 1" Straight Bores are best used with the VB1560 Shutoff

Wt: 0.8 lbs. Length: 4"

1" ST BR 3/16"	3/16" Outlet	Smooth Bore Nozzle
1" ST BR 1/4"	1/4" Outlet	Smooth Bore Nozzle
1" ST BR 3/8"	3/8" Outlet	Smooth Bore Nozzle
1" ST BR 1/2"	1/2" Outlet	Smooth Bore Nozzle
1" ST BR 5/8"	5/8" Outlet	Smooth Bore Nozzle
1" ST BR 3/4"	3/4" Outlet	Smooth Bore Nozzle
1" ST BR 15/16"	15/16" Outlet	Smooth Bore Nozzle



1 1/2" Smooth Bore features:

- Constructed of anodized aluminum
- Available in both NST and NPSH
- 1 1/2" Straight Bores are best used with the VB9520 Shut-Off

Wt: 0.8 lbs. Length: 5"

ST BR 3/8"	3/8" Outlet	Smooth Bore Nozzle
ST BR 1/2"	1/2" Outlet	Smooth Bore Nozzle
ST BR 5/8"	5/8" Outlet	Smooth Bore Nozzle
ST BR 3/4"	3/4" Outlet	Smooth Bore Nozzle
ST BR 7/8"	7/8" Outlet	Smooth Bore Nozzle
ST BR 15/16"	15/16" Outlet	Smooth Bore Nozzle
ST BR 1"	1" Outlet	Smooth Bore Nozzle
ST BR 1-1/16"	1 1/16" Outlet	Smooth Bore Nozzle
ST BR 1-1/8"	1 1/8" Outlet	Smooth Bore Nozzle
ST BR 1-1/4"	1 1/4" Outlet	Smooth Bore Nozzle

1.5" Stacked Tip features:

- Constructed of anodized aluminum
- 1 1/2" NST and NPSH

STT-2

15/16" and 1/2" Outlets

- Dual Stacked Tip
- Wt: 1 lb. Length: 8"

STT-1

1 1/4", 1 1/8", and 1" Outlets

- Triple stacked tip
- Wt: 2 lbs. Length: 12"



SMOOTH BORE THEORETICAL FLOW DATA/ GPM

PSI	3/16"	1/4"	3/8"	1/2"	5/8"	3/4"	7/8"	15/16"	1"	1 1/16"	1 1/8"	1 1/4"
40	6.5	11	27	48	73	107	143	166	189	212	239	295
50	7.5	13	31	54	82	119	160	186	211	237	267	329
60	8	14	32	57	89	129	176	202	230	259	291	359
80	9.3	16.6	37	66	103	149	203	233	265	299	336	415
100	10	18	43	75	116	168	227	262	298	335	377	465

VB1560 VB1560 VB1560 VB1560 VB1560 VB1560 (CAFS)

VB1560 (CAFS)

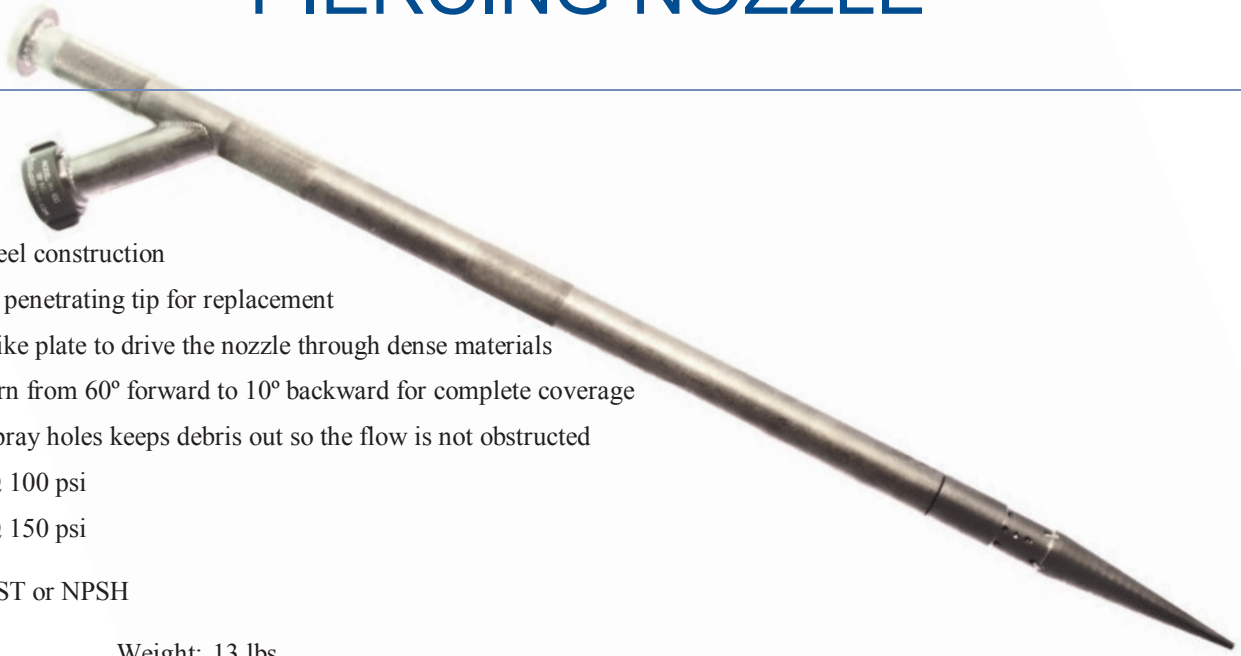
VB3012 VB3012 VB3012

VB9520 VB9520 VB9520 VB9520 VB9520 VB9520 VB9520 VB9520 VB9520

VB9520-2.5 VB9520-2.5 VB9520-2.5 VB9520-2.5 VB9520-2.5 VB9520-2.5 VB9520-2.5 VB9520-2.5 VB9520-2.5

WORKS
BEST
WITH:

PIERCING NOZZLE



PN-100

- Stainless steel construction
- Removable penetrating tip for replacement
- Durable strike plate to drive the nozzle through dense materials
- Spray pattern from 60° forward to 10° backward for complete coverage
- Recessed spray holes keeps debris out so the flow is not obstructed
- 100 gpm @ 100 psi
- 120 gpm @ 150 psi

Swivel : 1.5" NST or NPSH

Length: 41"

Weight: 13 lbs.

PN-100-HOSE

- 6' Hose extension for PN-100
- 1.75" double jacket with 1.5" couplings



Swivel : 1 1/2" NST

Length: 6'

Weight: 3.2 lbs.

PN-100-TIP

- Spray pattern from 60° forward to 10° backward for complete coverage
- 100 gpm @ 100 psi
- 120 gpm @ 150 psi



Length: 10"

Weight: 2.4 lbs.

PN-100-EXT

- 3' stainless steel extension for PN-100



Length: 36"

Weight: 10.4 lbs.

PN-100-COMBO

- PN100 + PN-100-HOSE + SBV15SS
- COMBO increases maneuverability of the nozzle at a nice price.

Swivel : 1.5" NST

Length: 41"

Weight: 17 lbs.



CAFS & SMOOTH BORE NOZZLES

Quality COMPRESSED AIR FOAM solutions

CAFS-VIP-10

The C&S 1" CAFS Nozzle is a combination of the VB1560 Ball shutoff with full 1" waterway with a choice of a C&S Supply 1" Smooth bore tip (3/16", 1/4", 3/8", 1/2", 5/8", 3/4" or **15/16"** outlet) Not using CAFS? This combo makes a great complete smooth bore nozzle. Both parts are constructed of hard coated aluminum.

- Choice of outlet sizes above, w/ 1" base (comes standard with 15/16" outlet)
- 1" Fe. Swivel Inlet NST or NPSH

Wt: 2.8 lbs Length: 9.25"



CAFS-VIP-15

The C&S 1.5" CAFS Nozzle is a combination of the VB9520 Ball shutoff with full 1 3/8" waterway with a choice of a C&S Supply 1 1/2" Smooth bore tip (3/4", 15/16", 1", 1-1/16", **1-1/8"** outlet) Not using CAFS? This combo makes a great complete smooth bore nozzle. Both parts are constructed of hard coated aluminum.

- Choice of outlet sizes above, w/ 1.5" base (comes standard with 1-1/8" outlet)
- 1.5" Fe. Swivel Inlet NST or NPSH

Wt: 4.4 lbs. Length: 11"



STBR-VIP-25

The C&S 2.5" Straight Bore Nozzle is a combination of the VB9520 2.5" Ball shutoff with full 1 3/8" waterway with a choice of a C&S Supply 1 1/2" Smooth bore tip (3/4", 15/16", **1"**, 1-1/16", 1-1/8" outlet) This combo makes a great complete smooth bore nozzle. Both parts are constructed of hard coated aluminum.

- Choice of outlet sizes above, w/ 1.5" base (comes standard with 1" outlet)
- 1.5" Fe. Swivel Inlet NST or NPSH

Wt: 5.6 lbs. Length: 12.75"



VBPP-STT1

The C&S Playpipe combo is a combination of the VBPP9520-2.5 Ball shutoff with full 1 3/8" waterway with a Triple Stack smooth bore nozzle with 1 1/4", 1 1/8", and 1" outlets. This combo makes a great complete 2.5" smooth bore nozzle. Both parts are constructed of hard coated aluminum.

- Outlet sizes: 1 1/4", 1 1/8", and 1" w/ 1.5" NST base
- 2.5" Fe. Swivel Inlet NST Only

Wt: 7.2 lbs. Length: 22"



COMBO “BREAK-APART” NOZZLES

SB-VIP-10

The C&S 1" Economy Special, “BREAK-APART” nozzle is a combination of the VB1560 Ball shutoff with full 1" waterway with a C&S Supply 1" Bumperless Dual Range nozzle which flows 10 and 23 GPM. Both parts are constructed of hard coated aluminum.

- [110/23BL](#) (page 18)
- [VB1560](#) (page 16)
- 1" NST or NPSH

Wt: 2.5 lbs. Length: 7.5"



SB-VIP-15

The C&S 1.5" Economy Special, “BREAK-APART” nozzle is a combination of the VB3012 Ball shutoff with full 1" waterway with a choice of a C&S Supply 1 1/2" Small Dual range or Constant Flow Nozzle. The combo comes standard with the [1560/20](#) (optional tips: [1590/20](#), [1560](#), or [15100](#)) Both parts are constructed of hard coated aluminum.

- [1560/20](#) (page 18)
- [VB3012](#) (page 16)
- 1.5" NST or NPSH

Wt: 3.4 lbs. Length: 7.5"



SB-FGP12-1

1" High performance hard foam cartridge proportioner nozzle with pistol grip for 12" or smaller hard cartridge foam sticks. The combo comes standard with the [110/23](#) (optional tips: [105/15](#), [115](#), or [130](#))

COMBO consists of:

- [VB1560](#) - 1" Shutoff with pistol grip
- [FGP12-1](#) - 1" Foam Gun Proportioner
- [110/23](#) - 1" Nozzle tip 10/23 GPM
- [FCA-02](#) - 2 X 12" Class “A” Foam Cartridges

Wt: 5lbs. Length: 25"



COMBO available with the shorter 6" proportioner as well:

[SB-FGP6-1](#)

SB-FGP12-15

1.5" High performance hard foam cartridge proportioner nozzle with pistol grip for 12" or smaller hard cartridge foam sticks. The combo comes standard with the [1560/20](#) (optional tips: [1590/20](#), [1560](#), or [15100](#))

COMBO consists of:

- [VB3012](#) - 1.5" Shutoff with pistol grip
- [FGP12-15](#) - 1.5" Foam Gun Proportioner
- [1560/20](#) - 1.5" Nozzle tip 20/60 GPM
- [FCA-02](#) - 2 X 12" Class “A” Foam Cartridges

Wt: 5lbs. Length: 25"



COMBO available with the shorter 6" proportioner as well:

[SB-FGP6-15](#)

WILDLAND EQUIPMENT

TT300

- Valve has three positions: Lower Outlet, Upper Outlet, and Off
- Outlets are 3/4" NH (Garden Hose Threads)
- Standard tips are 3 GPM Fog and 3/16" straight Bore Tip
- Other tip options are (Specify configuration):

Fog tips:

TT300 FOG TIP - 3 GPM (Standard)
TT300 FOG TIP - 6 GPM
TT300 FOG TIP - 15 GPM

- 1" Fe. Rigid NST or NPSH

Wt: 1.5 lbs. Length: 6"



Straight bore tips:

TT300 STRAIGHT TIP - 3/16" (Standard)
TT300 STRAIGHT TIP - 1/4"
TT300 STRAIGHT TIP - 3/8"



FLT130

- Compact Smooth bore nozzle with flat stream pan
- 30GPM@100 PSI fully open in smooth bore position
- 20GPM@100PSI in flat stream position
- 3/4" garden hose insert in a 1" Fe. NPSH Rigid Base

Wt: 0.5 lbs. Length: 5"



TV1510

- The T-Valve is cast aluminum designed to help extend wildland fire fighting hose lays and to supply an additional 1" line for filling pump cans or mop-up use
- The 1" outlet is controlled by an internal valve with a handle
- 1.5" Fe. x 1.5" M. x 1" M. Any combination of NST or NPSH (Specify Thread Combination)

Wt: 1 lb. Length: 5"



T-1

- No Valve
- Includes cap and chain
- 1" Fe. x 1" M. x 1" M. NST or NPSH

Wt: .05 lbs. Length: 4"



T-1.5

- No Valve
- Includes cap and chain
- 1.5" Fe. NST x 1.5" M. NST x 1" M. NPSH
- or
- 1.5" Fe. NST x 1.5" M. NST x 1" M. NST

Wt: .05 lbs. Length: 5"



CAP & CHAIN

- Aluminum Cap with Brass Chain
- Can be added to TV1510
- Comes with T-1 and T-1.5 as shown on the left
- 1" Fe. NST or NPSH

Wt: .5 lbs.



HC1510

- More rigid design with knuckle guard
- Curved clamping area and clasp design for easy, secure operation
- The wildland hose clamp is made of cast aluminum
- Designed for use on single jacket fire hose up to 1.75"
- It has a built-in spanner for use on fittings 2.5" and smaller

Wt: 1.8 lbs. Length: 10.75"



HOSE COILERS

Saving firefighters backs since 1996

MC40 & MC65

- Designed to make easy work out of coiling 100' of single jacket or 50' of double jacket hose
- Folds up for small storage and easy transportation
- Capable of Dutch rolls
- Mounting bracket (MB) included
- Trailer Hitch and Wildland Mounting Brackets available for more flexibility in where hose can be coiled, see below



MC40

- Rolls 1"- 1.5" hose
 - MB mount included
- Wt: 6.5 lbs.



MC65

- Rolls 1.5" to 3" hose
 - MB mount included
- Wt: 7 lbs.

MB

- Additional Square Mount for the MC40 or MC65 Coilers. The Square Mount can be bolted to any Vertical surface

Wt: 1 lb.

THMB

- The THMB (Trailer Hitch Mounting Bracket) makes for quick field setup, use, and breakdown of the MC40 or MC65 Hose Coilers. It slides into any class 4 (2") hitch receiver tube

Wt: 5 lbs.

WLMB

- The WLMB (Wild Land Mounting Bracket) is great for remote use where finding a place to mount the MC40 or MC65 can be tricky. Simply drive the mount into the ground roll up the hose

Wt: 6 lb.

TH80

- Extra trailer hitch mount for the MC80 Hose Coiler

Wt: 1 lb.

TB80

- Extra mount for the MC80 bolts to the Tailboard so hose can be directly loaded into the hose bed of the engine. The Tailboard Mount can be bolted to any sturdy horizontal surface

Wt: 1.5 lbs.

MC80

- Designed to make easy work out of coiling 4" to 7" hose
- Attaches to the Hitch Receiver of a pickup or the Tail-board of a truck using TB80 or to your trailer hitch mount using TH80. Both are included
- Constructed of heavy gauge steel, for superb durability



MC80

- Rolls 4" to 7" hose
- Comes with both a TB80 and a TH80 mount included

Wt: 10 lbs.



Genfo Water Backpacks

The Cadillac of water backpacks

GENFO45

- The C&S original Water Back Pack
- 5 gallon capacity (only 4 minutes to completely discharge)
- Industrial quick connects for quick fill or stowing the pump wand.
- Double action chrome plated brass hand pump
- Effective stream distance of up to 24 feet (max 30 feet)
- Large 4" polymer cap for easy refill
- Durable polymer and textile collapsible reservoir
- Thermo welded seams for strength and durability
- Reinforced at the top and bottom for extra durability
- Flexible horizontal baffle inside to reduce shifting water weight
- Nozzle tip adjusts from straight stream to spray pattern
- Easy 'No Tool' maintenance

Wt: 5 lbs.



GENFO-PRO

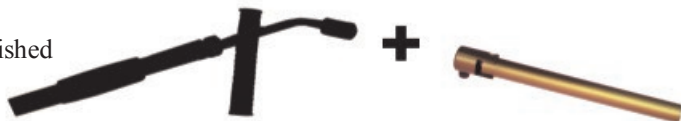
- The new more comfortable and versatile Water backpack
- 5 gallon capacity (only 4 minutes to completely discharge)
- Industrial quick connects for quick fill or stowing the pump wand.
- Double action chrome plated brass hand pump
- Effective stream distance of up to 24 feet (max 30 feet)
- Large 4" polymer cap with Screen for easy refill
- Durable textile pack with separate replaceable reservoir
- Thermo welded seams for strength and durability
- Padded shoulder straps and waist belt
- Storage pouch for foam concentrate
- Straps to hold the wand and/or hold a tool
- Nozzle tip adjusts from straight stream to spray pattern
- Easy 'No Tool' maintenance

Wt: 5 lbs.

GENFO45 FOAM TUBE

- Foam attachment option is quick to install or remove and aspirates the foam solution making finished foam

Wt: 1 lb.



Drip Torch

The best drip torch on the market

- Conforms to Forest Service Specifications (USDA FS 5100-614)
- Meets DOT regulations for transport of flammable fuel UN # 1B1-150
- Red body complies with new OSHA regulations 29 CFR 1910.114
- Heavy duty, light weight aluminum body
- Reversible burner for easy storage and transport
- Check valve to protect against flashback
- Breather valve
- Large diameter mouth for ease in filling
- Double bottom for extra durability

DT125

Height: 14" (closed), 25.5" (assembled)
 Diameter: 6"
 Weight: 4.6 lbs. (empty), 16 lbs. (full)
 Capacity: 1.25 U.S. Gallons
 Ship Wt: 6 lbs.



(Closed for transport)



(Assembled for use)

DT125-MB

- Steel mount to secure the DT-125 for transport
- Designed so the DT-125 Lifts out
- Bolt holes in the bottom to attach to the tail board, skid unit or other horizontal sturdy surface

Wt: 2.6 lbs. Ht: 8 7/16"



DT125-QFMB

- Mount to secure the DT-125 for transport
- Designed so the DT-125 pulls straight out
- 3 Bolt/screw holes in the mount to attach in a compartment, on a skid unit or other vertical sturdy surface
- NOTE: When mounting the unit, a shelf or piece of angle iron needs to support the base of the torch

Wt: .8 lbs.



REPLACEMENT PARTS:



DRT03
Tank cover

DRT0506

Check valve ball and seat



DRT07
Outlet screen

DRT08

Discharge plug



DRT11

Spout and fuel trap



DRT14

Nozzle/igniter mount



DRT15

Igniter



DRT22

Tank collar gasket



DRT23

Tank cover lock ring



DRT35

Air breather valve



DRT83

Chain assembly



CSsupplyinc.com

Foam Gun Proportioner

THE FOAM GUN PROPORTIONER FOAM CARTRIDGES

FGP12-1

- For 12" or smaller hard cartridge foam sticks
- 1" Rigid Fe. X 1" M. NST or NPSH
- Now includes 2 class "A" Foam Cartridges
Wt: 2.2 lbs. Length: 15.5"



FGP12-15

- For 12" or smaller hard cartridge foam sticks
- 1.5" Rigid Fe. X 1.5" M. NST or NPSH
- Now includes 2 class "A" Foam Cartridges
Wt: 2.2 lbs. Length: 15.5"



FGP6-1

- For 6" or smaller hard cartridge foam sticks
- 1" Rigid Fe. X 1" M. NST or NPSH
- Now includes 2 class "A" Foam Cartridges
Wt: 1.6 lbs. Length: 15.5"



FGP6-15

- For 6" or smaller hard cartridge foam sticks
- 1.5" Rigid Fe. X 1.5" M. NST or NPSH
- Now includes 2 class "A" Foam Cartridges
Wt: 1.6 lbs. Length: 15.5"



FCA-24

- *Price per box if 1-9 boxes are purchased (See Price List)*
- 1 BOX of 24 - 12" Class A foam cartridges
Wt: 14.4 lbs. Length: 12"

FCA-240

- *Price per box if 10+ boxes are purchased (See Price List)*
- 1 BOX of 24 - 12" Class A foam cartridges
Wt: 14.4 lbs. Length: 12"



High Viz™

Can you see me now?

All Forestry Products meet or exceed USDA FS 5100 Series Specification

WV1010-HIGH-VIZ

- 1" Fe. Swivel x (2) 1" M. outlets
- Powder coated High Visibility Yellow with Red ORALITE® Reflective Tape
- Front and rear seats for less friction loss
- Any combination of NST and NPSH

Wt: 3 lbs.



WV1510-HIGH-VIZ

- 1.5" Fe. Swivel x (2) 1" M. outlets
- Powder coated High Visibility Yellow with Red ORALITE® Reflective Tape
- Front and rear seats for less friction loss
- Any combination of NST and NPSH

Wt: 4 lbs.



WV15-HIGH-VIZ

- 1.5" Fe. Swivel x (2) 1.5" M. outlets
- Powder coated High Visibility Yellow with Red ORALITE® Reflective Tape
- Front and rear seats for less friction loss
- Any combination of NST and NPSH

Wt: 4 lbs.



TV1510-HIGH-VIZ

- The T-Valve is cast aluminum designed to help extend wildland fire fighting hose lays and to supply an additional 1" line for filling pump cans or mop-up
- Powder coated High Visibility Yellow with Red ORALITE® Reflective Tape
- The 1" outlet is controlled by an internal valve with a handle
- 1.5" Fe. x 1.5" M. x 1" M. Any combination of NST or NPSH (*Specify Thread Combination*)

Wt: 1 lb. Length: 5"



HC1510-HIGH-VIZ

- Powder coated High Visibility Yellow with Red ORALITE® Reflective Tape
- More rigid design with knuckle guard
- Curved clamping area and clasp design for easy, secure operation
- The wildland hose clamp is made of cast aluminum
- Designed for use on single jacket fire hose up to 1.75"
- It has a built-in spanner for use on fittings 2.5" and smaller

Wt: 1.8 lbs. Length: 10.75"



WYE VALVES

Smooth waterway for less friction loss

All Forestry Products meet or exceed USDA FS 5100 Series Specification

WV1010

- 1" Fe. Swivel x (2) 1" M. outlets
- Front and rear seats for less friction loss
- Any combination of NST and NPSH

Wt: 3 lbs.



WV1510

- 1.5" Fe. Swivel x (2) 1" M. outlets
- Front and rear seats for less friction loss
- Any combination of NST and NPSH
- NOTE: Can also be ordered as 1.5" Fe. X 1.5" M. X 1" M.

Wt: 4 lbs.



WV15

- 1.5" Fe. Swivel x (2) 1.5" M. outlets
- Front and rear seats for less friction loss
- Any combination of NST and NPSH

Wt: 4 lbs.



WV2510

- 2.5" Fe. Swivel x (2) 1" M. outlets
- Front and rear seats for less friction loss
- 2.5" NST ONLY
- 1" outlets NST or NPSH
- Powder-coated red
- NOTE: Can also be ordered as 2.5" Fe. x 1.5" M. x 1" M.

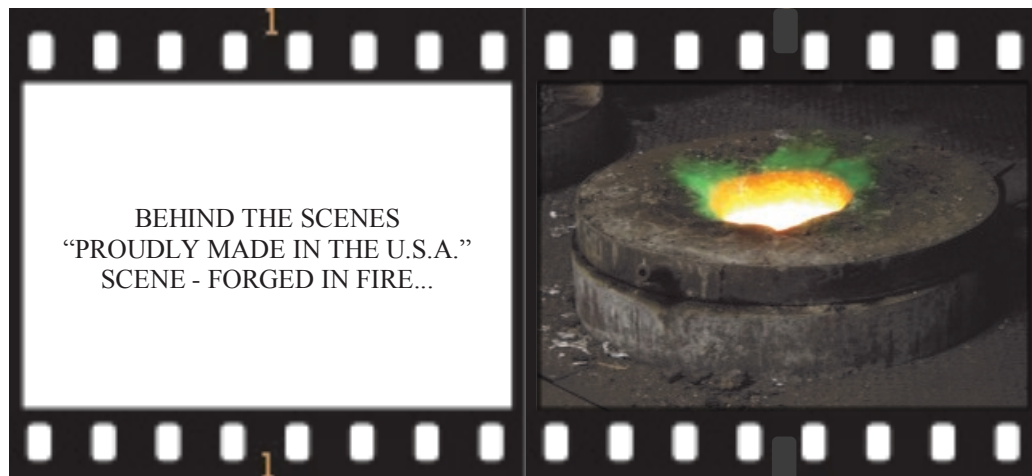
Wt: 5 lbs.



WV2515

- 2.5" Fe. Swivel x (2) 1.5" M. outlets
- Front and rear seats for less friction loss
- 2.5" NST ONLY
- 1.5" outlets NST or NPSH
- Powder-coated red

Wt: 5 lbs.



Ask us about special size and thread combinations

WYE VALVES

Smooth waterway for less friction loss

WV2515-B (Brass)

- 2.5" Fe. Swivel x (2) 1.5" M. outlets
- NST only
- Powder-coated red
- CALL FOR AVAILABILITY

Wt: 7 lbs.



WV2525

- 2.5" Fe. Swivel x (2) 2.5" M. outlets
- NST only
- Powder-coated silver

Wt: 9 lbs.



W15 (Plain Wye)

- 1.5" Fe. Swivel X (2) 1.5" M. Outlets
- Aluminum Plain Wye (no valves)

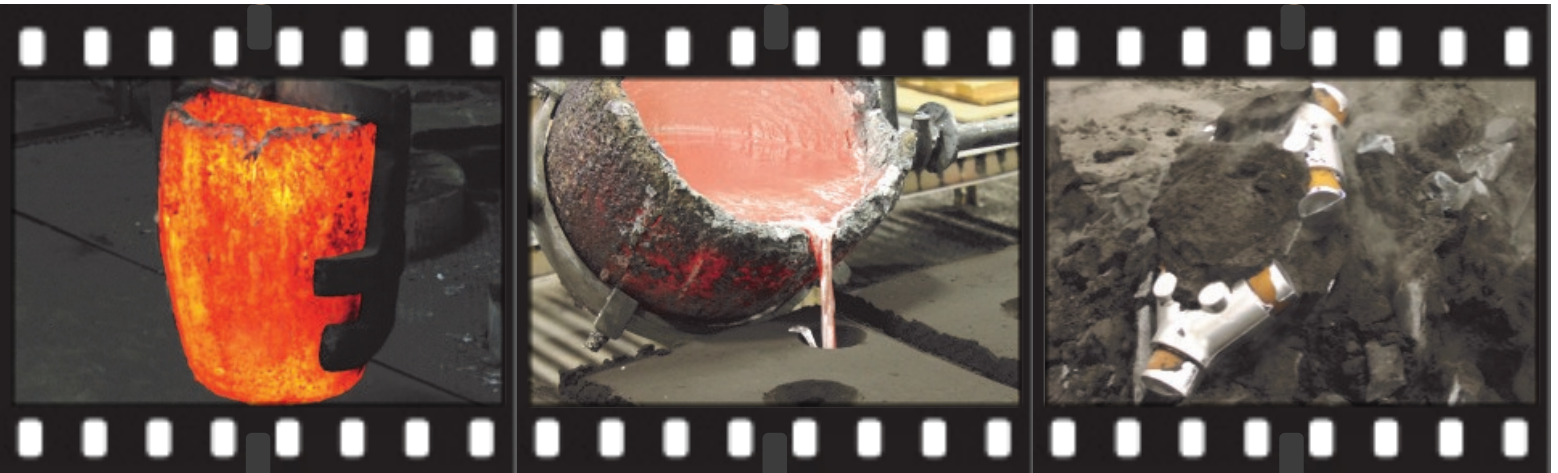
Wt: 3 lbs.



W2515 (Plain Wye)

- 2.5" Fe. Swivel X (2) 1.5" M. Outlets
- Aluminum Plain Wye (no valves)

Wt: 3 lbs.



HYDRANT ACCESSORIES

The standard in valves and innovative wrench design

HYDRANT GATE VALVE HGV25

- Designed with stainless steel non-rising internal stems
- The aluminum body, internal gate and the inlet/outlet fittings are hard anodized for maximum protection against corrosion
- The units take approximately 10 turns to open and close
- 2.5" Fe. Swivel and 2.5" M. outlet NST

Wt: 4 lbs. Ht: 11 1/2"



BRASS HYDRANT GATE VALVE HGV25-B

- They are designed with brass non-rising internal stems
- The units take 10 turns to open and close
- 2.5" Fe. Swivel and 2.5" M. outlet NST

Wt: 9 lbs. Ht: 11 1/2"



HYDRANT WRENCH HW733

- Fits hydrant stems BOTH 1" (square and pentagon) and 1.5" (pentagon)
- Will work on worn stems
- No more adjusting, just put the open end over the Hydrant stem and pull the handle, the harder you pull, the tighter the grip
- To release, just relax and lift it off the stem
- Will actually stay on the stem and not in the mud while you work
- The spanner end of the wrench is designed for use on 2 1/2" and larger fittings

Wt: 5 lbs. Length: 18"



HOSE HANDLER

Finally a High-Rise Pack that Works!



THE HOSE HANDLER

♦ HIGH-RISE PACK ♦



Made for Firefighters
by Firefighters



Patent Pending

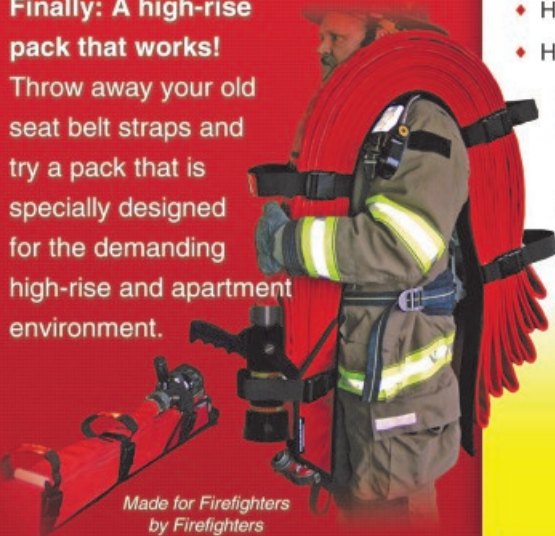
THE HOSE HANDLER

Patent Pending

♦ HIGH-RISE PACK ♦

Finally: A high-rise pack that works!

Throw away your old seat belt straps and try a pack that is specially designed for the demanding high-rise and apartment environment.



Made for Firefighters
by Firefighters

**Comfortable and Secure
Over the Pack or Over the Shoulder**

- ♦ Easy to Load, Carry and Deploy
- ♦ Compact and Highly Durable
- ♦ Designed for Use with Gloved Hands
- ♦ Holds Hose, Nozzle and Gated Wye Securely
- ♦ Horseshoes and Un-horseshoes without bunching

HDL6: for transverse fire engine compartments
Capacity: 1½", 1¾", & 2" hose up to 100' **Length:** 5'9"

HDL7: for longitudinal hose bed compartments
Capacity: 1½", 1¾", & 2" hose up to 100' **Length:** 7'0"

BRASS BALL VALVES/STRAINERS

Prevent rocks, sticks and other gunk from getting into suction hose line

BRASS FULL PORT VALVES

Heavy duty brass full port valves. Use to control or shutoff water, gas, oil or steam. Great for use on skid units and brush trucks.

- 600 W.O.G.
- Teflon Seals
- Full Port Chrome Plated Ball
- Adjusts Flow or Positive shutoff



BFPV38	3/8" x 3/8"	Wt: 0.3lbs.	BFPV125	1 1/4" x 1 1/4"	Wt: 1.6 lbs
BFPV50	1/2" x 1/2"	Wt: 0.5 lbs.	BFPV150	1 1/2" x 1 1/2"	Wt: 2.4 lbs.
BFPV75	3/4" x 3/4"	Wt: 0.7 lbs.	BFPV200	2" x 2"	Wt: 3.5 lbs.
BFPV100	1" x 1"	Wt: 1.1 lbs.	BFPV300	3" x 3"	Wt: 10.4 lbs.
BFPV400	4" x 4"	Wt: 17.5 lbs.			

BRASS FOOT VALVE

- Valve body is cast Brass
- Corrosion resistant, stainless steel screen, spring and lock nut

FV-B 1/2"	1/2"	Fe. NPT
FV-B 3/4"	3/4"	Fe. NPT
FV-B 1"	1"	Fe. NPT
FV-B 1 1/4"	1 1/4"	Fe. NPT
FV-B 1 1/2"	1 1/2"	Fe. NPT
FV-B 2"	2"	Fe. NPT
FV-B 3"	3"	Fe. NPT
FV-B 4"	4"	Fe. NPT



Stainless Steel Foot Valve Strainers

- All stainless steel construction
- Extremely durable & corrosion resistant

FV-SS 1"	1"	Fe. NPT
FV-SS 1 1/4"	1 1/4"	Fe. NPT
FV-SS 1 1/2"	1 1/2"	Fe. NPT



Plastic Foot Valve Strainers

- Non-corrosive Brady plastic construction
- Nose cone design reduces water turbulence

FV-P 3/4"	3/4"	Fe. NPT
FV-P 1"	1"	Fe. NPT
FV-P 1 1/4"	1 1/4"	Fe. NPT
FV-P 1 1/2"	1 1/2"	Fe. NPT



ADAPTERS & REDUCERS



AD75GHT1NH
3/4" Fe. GHT X 1" M. NST
AD75GHT1NP
3/4" Fe. GHT X 1" M. GHT

AD1NH75GHT

1" Fe. NST x 3/4" M. GHT
AD1NP75GHT
1" Fe. NPSH x 3/4" M. GHT



AD1NH1NP
1" Fe. NST x 1" M. NPSH
AD1NP1NH
1" Fe. NPSH x 1" M. NST

AD1NH1.5NH

1" Fe. NST x 1.5" M. NST
AD1NP1.5NH
1" Fe. NPSH x 1.5" M. NST



AD1.5NH1NH
1.5" Fe. NST x 1" M. NST
AD1.5NH1NP
1.5" Fe. NST x 1" M. NPSH

AD1.5NH75GHT
1.5" Fe. NST x 3/4" M. GHT
AD1.5NP75GHT
1.5" Fe. NPSH x 3/4" GHT



AD2.5NH1.5NH
2.5" Fe. NST x 1.5" M. NST



ADBIM15M
BS-336 65MM - BI M. x 1.5" M. NST
ADBIM25M
BS-336 65MM - BI M. x 2.5" M. NST

ADMM1.5NH1.5NH
1.5" M. NST x 1.5" M. NST
ADMM2.5NH2.5NH
2.5" M. NST x 2.5" M. NST



ADS1.5M1.5NH
1.5" STORZ x 1 1/2" RIGID M. NST
ADS5M2.5NH
5" STORZ x 2.5" RIGID M. NST

ADFF1.5NH1.5NH
1.5" Fe. NST X 1.5" Fe. NST
ADFF2.5NH2.5NH
2.5" Fe. NST x 2.5" Fe. NST



**Don't see the adapter you are looking for?
Call us for availability & pricing!!**

VIPER REPAIR

Repair service and Repair kits

C&S Repair Service:

C&S Supply services all of the products we sell. Our hourly labor charge is nominal and it includes disassembling and diagnosing the problem, cleaning the nozzle, repairs as necessary, and reassembly. Every Nozzle is flow tested at the appropriate pressure, then each nozzle/valve pressure tested at 200-250 psi before it is returned. C&S Supply is the only authorized U.S. repair location of Viper nozzles. C&S Supply only warranties repairs made by C&S Supply.



Viper Nozzle Repair Kits:

- Kits include all internal seals, shutoff ball, rubber bumper, pistol grip, shutoff handle, shutoff handle hardware, locator pin, swivel bearings, set pins, spinning teeth, and o-rings needed to repair a Viper nozzle.

VNRK-1560

- Repair Kit for model SG1560

VNRK-3012

- Repair Kit for models SG3012 & SG7515

VNRK-9520

- Repair Kit for models SG9520 & SG12250

VNRK-BDS752

- Repair Kit for model BDS752

VNRK-BD3012

- Repair Kit for models BD3012 & BD7515

VNRK-1550

- Repair Kit for models CG1550 & FT1550

VNRK-2510

- Repair Kit for models CG2510, CG5016, FT2510 & FT5016

VNRK-8020

- Repair Kit for models CG8020, FT8020, & FT12250

VNRK-IND

- Repair Kit for models ST2510-PV & ST5016-PV

VNRK-IND2.5

- Repair Kit for models ST2510-PV & ST5016-PV



Viper Valve Repair Kits:

- Kits include: shutoff ball, seal, shutoff handle, shutoff handle hardware, swivel ball bearings, o-rings, and set pins.

VVRK-3012

- Repair Kit for Small VIPER shutoff Valves. Models ending in 1550, 1560, 2510, 3012, 5016, 7515 & 752

VVRK-9520

- Repair Kit for Large VIPER shutoff Valves. Models ending in 8020, 9520, & 12250



VIPER REPAIR

Common Valve Parts

Viper Handle Hardware:

- Kits include: ball locator, ball actuator, pan head cover and two O-rings.

V-HH5-3012

- Handle Hardware for Small VIPER shutoff Valves. Models ending in 1550, 1560, 2510, 3012, 5016, 7515 & 752

V-HH5-9520

- Handle Hardware for Large VIPER shutoff Valves. Models ending in 8020, 9520 & 12250



Ball and Seat Combos:

VBSC-3012

- Ball & Seat for Small VIPER shutoff Valves. Models ending in 1550, 1560, 2510, 3012, 5016, 7515 & 752

VBSC-9520

- Ball & Seat for Large VIPER shutoff Valves. Models ending in 8020, 9520 & 12250



Viper Pistol Grip:

V-PG15V

- Replacement Pistol Grip for ALL VIPER shutoffs



Viper Handles:

V-HANDLE-3012

- Replacement handle and attaching hardware for Small VIPER shutoff. Models ending in 1550, 1560, 2510, 3012, 5016, 7515 & 752

NOTE: The above handle is now a kit. It was developed due to a handle design improvement in 2016

- Available in an assortment of colors: Red, Orange, Yellow, Green, Blue, and Black

V-HANDLE-9520

- Replacement handle only for Large VIPER shutoff. Models ending in 8020, 9520 & 12250
- Available in an assortment of colors: Red, Orange, Yellow, Green, Blue, and Black



V-HANDLE-M-3012

- Replacement handle only for Small VIPER shutoff. Models ending in 1550, 1560, 2510, 3012, 5016, 7515 & 752
- Compact And durable replacement option to the traditional composite

V-HANDLE-M-9520

- Replacement handle only for Large VIPER shutoff. Models ending in 8020, 9520 & 12250
- Compact And durable replacement option to the traditional composite



FLOW DATA

Select Gallonage

MODEL	NOZZLE PRES-SURE (psi)	NOZZLE FLOW (GPM)	STREAM SETTING	EFFECTIVE REACH
	75	13	SS	59
		26	SS	82
		43	SS	92
		52	SS	102
	100	15	SS	62
		30	SS	85
		50	SS	98
		60	SS	108
	125	17	SS	69
		34	SS	98
		56	SS	105
		67	SS	108
	75	26	SS	75
		52	SS	105
		82	SS	125
		108	SS	131
	100	30	SS	85
		60	SS	112
		95	SS	131
		125	SS	141
	125	34	SS	92
		67	SS	118
		106	SS	138
		140	SS	148
	75	65	SS	112
		87	SS	121
		108	SS	135
		130	SS	138
	100	75	SS	118
		100	SS	138
		125	SS	114
		150	SS	148
	125	84	SS	125
		112	SS	141
		140	SS	151
		168	SS	157
	75	82	SS	121
		108	SS	131
		130	SS	141
		173	SS	144
	100	95	SS	128
		125	SS	141
		150	SS	148
		200	SS	154
	125	106	SS	128
		140	SS	141
		168	SS	144
		224	SS	161
	75	94	SS	125
		113	SS	135
		150	SS	144
		188	SS	148
	100	125	SS	131
		150	SS	144
		200	SS	151
		250	SS	157
	125	140	SS	135
		168	SS	144
		224	SS	154
		280	SS	164

FLOW DATA

Constant Gallonage, Automatic Gallonage



CONSTANT GALLONAGE FLOW DATA

STYLE	NOZZLE PRESSURE (psi)	NOZZLE FLOW (GPM)	STREAM SETTING	EFFECTIVE REACH
CG1550-30	75	26	SS	72
	100	30	SS	85
	150	37	SS	98
CG2510-95	75	82	SS	125
	100	95	SS	135
	150	116	SS	144
CG5016-125	75	108	SS	131
	100	125	SS	144
	150	153	SS	154
CG8020-200	75	182	SS	144
	100	210	SS	157
	150	257	SS	164



AUTOMATIC FLOW DATA

STYLE	NOZZLE PRESSURE (psi)	NOZZLE FLOW (GPM)	STREAM SETTING	EFFECTIVE REACH
FT1550	75	15	SS	69
	100	23	SS	82
	150	50	SS	112
FT2510	75	25	SS	121
	100	38	SS	131
	150	100	SS	141
FT5016	75	50	SS	128
	100	70	SS	138
	150	160	SS	151
FT8020	75	80	SS	131
	100	145	SS	144
	150	200	SS	161
FT12250	50	125	SS	151
	100	200	SS	145
	150	250	SS	165

FLOW DATA

Low Pressure, Foam Equipment

LOW PRESSURE NOZZLES FLOW DATA

STYLE	NOZZLE PRES-SURE (psi)	NOZZLE FLOW (gpm)	STREAM SET-TING	EFFECTIVE REACH
SG7515-LP	75	75	SS	115
		100	SS	125
		125	SS	131
		150	SS	138
	100	87	SS	121
		115	SS	141
		144	SS	148
		173	SS	151
SG9520-LP	75	95	SS	125
		125	SS	135
		150	SS	141
		200	SS	148
	100	110	SS	131
		144	SS	141
		173	SS	151
		231	SS	157
FT5016-LP	75	70	SS	131
	100	110	SS	141
FT8020-LP	75	200	SS	138
	100	265	SS	161
CG-5016-LP	75	125	SS	135
	100	144	SS	148
CG8020-LP	75	210	SS	151
	100	242	SS	157

FOAM NOZZLES FLOW DATA

STYLE	NOZZLE PRES-SURE (psi)	NOZZLE FLOW (gpm)	EXPANSION RATE	EFFECTIVE REACH
PVB1560	75	30	10:1	30
	100	35	10:1	36
PVB3012	75	60	12:1	39
	100	69	12:1	46
PVB7515	75	95	9:1	46
	100	110	9:1	56

FOAM PROPORTIONER FLOW DATA

STYLE	PRESSURE (psi)	FLOW (gpm)	PRESSURE LOSS	
			FOAM	BY-PASS
BYPP1560	100	18	39%	7%
	150	23	39%	7%
BYPP3012	100	46	33%	14%
	150	56	33%	14%
BYPP7515	100	92	30%	15%
	150	113	30%	15%
BYPP9520	100	110	30%	15%
	150	130	30%	15%

CROSS REFERENCE CHART

<u>C & S PRODUCTS</u>	<u>AKRON</u>	<u>ELKHART</u>	<u>TFT</u>	<u>PROTEK</u>	<u>POK</u>	<u>CRESTAR</u>
CONSTANT FLOW						
1560						
1560	4717	N/A	N/A	N/A	12600	N/A
15100	N/A	N/A	ME1-STO*	814*	N/A	N/A
ST2510	4817	L-205-BA	ME1-STO*	814*	N/A	N/A
ST5016	4817	L-205-BA	ME1-STO*	N/A	N/A	N/A
DUAL RANGE NOZZLES						
110/23	N/A	S-205-BAF	D1024*	N/A	17748	FN1030*
1560/20	N/A	L-205-BAF	F2060	N/A	17506	N/A
1590/20	N/A	L-205-BAF	F2095*	N/A	N/A	N/A
STRAIGHT BORE NOZZLES						
1STBR3/16	N/A	N/A	DSB*	N/A	17156	N/A
1STBR1/4	N/A	N/A	DSB*	N/A	17155	N/A
1STBR3/8	1410	N/A	DSB*	N/A	1546-S	SBT45
1STBR1/2	N/A	N/A	DSB*	N/A	1546	N/A
1STBR5/8	N/A	N/A	N/A	N/A	1612	N/A
1CAFS3/4	N/A	N/A	N/A	N/A	1703	N/A
1CAFS15/16	N/A	N/A	N/A	N/A	8335	N/A
STBR1-1/4	1417 or 1499	187A	FSS11	N/A	8947	SBT61250
STBR1-1/8	1417 or 1499	187A	FSS10	105	N/A	SBT61125
STBR1-1/16	N/A	N/A	N/A	N/A	N/A	N/A
STBR1	1417 or 1499	187A	FSS9	105	1536	SBT6100
STBR15/16	1417 or 1499	187A	FSS12	105	1537	N/A
STBR7/8	1417 or 1499	187A	FSS8	105	14234	SBT60875
STBR3/4	1417	187A	FSS7	105	1704	N/A
STBR1/2	1417	187A	FSS5	105	1566	N/A
STT1	1420	ST-190-BA	FS-3STACK	115	8911	ST312
NOZZLE & SHUTOFF COMBO						
SBV10SSPG-110/23	N/A	N/A	DS1024P*	N/A	N/A	N/A
SVB15SSPG-1560/20	N/A	N/A	FS2060P*	N/A	N/A	N/A
SVB15SSPG-1590/20	N/A	N/A	FS2095P*	N/A	N/A	N/A
BALL SHUT OFF'S						
SBV10R	N/A	SB-275A-R	D75DR	N/A	N/A	N/A
SBV10SS-OR	2101	SB-275A	D75D	N/A	9981	BS10*
SBV10SSPG-OR	2102	SB-275GA	D75DP	100	9982	BS10
SBV15R	N/A	NA	N/A	N/A	N/A	N/A
SBV15SS-OR	2115	LB-275A	F100F	N/A	9983	BS15*
SBV15SSPG-OR	2116	LB-275GA	F100FP	101	9984	BS15
SBV25SS	2130 or 1828	JB-275 or B-96A	J140J	595	N/A	CHYV
WYE VALVES						
WV1010	N/A	B-100-SAF	ALYND-ND	505	90060	FWNL1000
WV15	2580	B-100-LA	ALYNF-NF	506	16015	FWNL1500
WV1510	2580	B-100-SAF	ALYNF-ND	506*	16014	FWNL1510
WV2515	2581	B-100A	AYNJ-NF	520	9866	LWNL
WV2515-B	2681	B-100	N/A	520-BC	17030	
WV2525	1582	B-97A	N/A	541	2772	HWSL
PLAIN WYE						
W15	N/A	1A	N/A	N/A	9911	N/A
W2515	N/A	1A	N/A	587*	9912	N/A
HYDRANT GATE VALVES						
HGV25	2285	X 86A	AC5ANJ-NJ	596	12782	CHGV
HGV25-B	285	X 86	AC5BNJ-NJ	N/A	12784	N/A
T-VALVE						
TV1510	N/A	N/A	ATNF/NF-ND	N/A	17548	N/A

* DENOTES SIMILAR BUT NOT EQUIVALENT MODEL

CROSS REFERENCE CHART VIPER MODELS

<u>C & S PRODUCTS</u>	<u>AKRON</u>	<u>ELKHART</u>	<u>TFT</u>	<u>PROTEK</u>	<u>POK</u>	<u>CRESTAR</u>
Select Gallonage Nozzles						
SG1560	1702	PSFS-HPG	DQS40P*	360	2311*	SF 40*
TIP	1703	TPSFS-HP	DQ40*	N/A	13133	N/A
SG3012	1720	SFL-OG	FQS125P	366	8370	SF125
TIP	1714	TSFL	FQ125	366-TO	8370T	SF 125 TIP ONLY
SG3012-BA	1718	STSFL-O	FQ125T	366-BA	N/A	N/A
SG7515	N/A	N/A	FTS200PS*	N/A	N/A	N/A
TIP	N/A	N/A	FTS200S*	N/A	N/A	N/A
SG9520	1723	SFM-G	FTS200PS*	367	10648	SF 200
TIP	1737	STFM	FTS200S*	367-TO	9974	SF 200 TIP ONLY
SG12250	1733	SF-G	FTS200PS*	368*	9724	SF250*
TIP	1744	TSF	FTS200S*	368-TO*	8346	SF 250 TIP ONLY*
LOW PRESSURE						
SG3012-LP	1720-75psi	N/A	FQ125PL*	366*	N/A	SF125LP-75
SG7515-LP	N/A	N/A	FTS200PL*	N/A	N/A	N/A
SG9520-LP	1723-75psi	N/A	FTS250PL*	367*	N/A	SF 200LP-75
TIP	1737-75psi	N/A	FT250L*	367-TO*	N/A	SF 200LP-75 TIP ONLY
SG12250-LP	1733-75psi	N/A	FTS250PL*	368*	N/A	SF 250LP-75*
TIP	1744-75psi	N/A	FT250L*	368-TO*	N/A	SF 250LP-75 TIP ONLY*
AUTOMATIC NOZZLES						
FT1550	N/A	SM-3FG	B-BGH*	310*	2317	AF 125*
TIP	N/A	TSM-3F	N/A	N/A	9970	N/A
FT2510	N/A	SM-10FG*	BGH-125*	310*	7674*	AF 125*
TIP	N/A	TSM-10F*	BTO-125*	N/A	9947*	N/A
FT5016	N/A	SM-10FG	N/A	311*	7674	AF 125*
TIP	N/A	TSM-10F	N/A	N/A	9947	N/A
FT5016-LP	N/A	N/A	N/A	N/A	N/A	AF 125LP-75*
FT8020	N/A	SM-20FG	HM-VPGI*	323	8397T*	AF 200
FT8020-LP	N/A	NA	HML-VPGI*	N/A	N/A	AF 200LP-75
FT12250	N/A	DSM-30FG*	H-2VPGI	324*	8397T*	AF 200*
CONSTANT GALLONAGE						
CG1550	4802*	4000-03	N/A	371	3570	CF 23
CG2510	4820	4000-13	ME1-VPGI	372	3568	CF 95
TIP	4814	4000-14	ME1-TO	372-TO	9978	N/A
CG5016	4820	4000-13	ME1-VPGI	372	3567	CF 95
TIP	4814	4000-14	ME1-TO	372-TO	9979	N/A
CG8020	4820	N/A	ME1-VPGI	373		CF 200
TIP	4814	N/A	ME1-TO	373-TO	N/A	CF 200 TIP ONLY
CG80202.5"	4823	N/A	ME2-2VPGI	374		CF 250
CG5016-LP	4820-75psi	4000-14-LP	ME1-VPGI	N/A	8929	CF 95LP-75 or 50
BALL SHUTOFFS						
SBV10SS	2101	SB-275A	D75D	100*	9981	BS10*
VB1560	2102	SB-275-GA	D75DP	100	9982	BS10*
SBV15SS	2115	LB-275A	F100F	100*	9983	BS15*
VB3012	2116	LB-275-GA	F100FP	101	9984	BS15
VB9520NPG	2129	B-275-A	F140F	102*	9985	BS2515*
VB9520	2127	B-275-GA	F140FP	102	9990	BS2515
VB9520NPG-2.5"	2125	DB-275-A	J140F	102*	9986	BS2525*
VB9020-2.5"	2126	DB-275-GA	J140FP	102	9987	BS2525

* DENOTES SIMILAR BUT NOT EQUIVALENT MODEL

SMALL VIPER VALVES

Part numbers ending in: 10SS, 15SS, 1530, 1550, 1560, 2510, 3012, 3015, 5016, 550, 540, 7515

VB1560 and VB3012 BOM			
REFERENCE	PART NAME	PART #	QUANTITY
1	1" GASKET	GASKET_1	1
1a	1.5" GASKET	GASKET_15	1
2	1" SWIVEL	V-1" SWIVEL	1
2a	1.5" SWIVEL	V-1.5" SWIVEL	1
3	SWIVEL O-RING	V-ORING-SW-3012	1
4	BALL	V-BALL-3012	1
5	PISTOL GRIP	V-PG15V	1
6	BALL LOCATOR (2 PIECES)	V-BALLLOC-3012	1
7			
8	PISTOL GRIP SET PIN	V-SETPIN-3012	1
9	VALVE BODY	VLVDY-3012	1
10	SEAT RETAINER (3 PIECES)	V-SEATRTNR-3012	1
11			
12			
13	BALL ACUATOR (2 PEICES)	V-BALLACT-3012	1
14			
15	PAN HEAD COVER	V-PANHEAD-3012	1
16	SWIVEL SET PIN	V-SETPIN-3012	1
17	BALL BEARINGS	V-BEARINGS-3012	32
18	HANDLE (BAIL)	V-HANDLE-3012	1

VB1560 and VB3012 AVAILABLE KITS		
KIT#	KIT Name	PARTS CONTAINED
VVRK-3012	Valve Repair Kit Small	1,1a,3,4,6,7,10,11,12,13,14,15,16,17,18
VBSC-3012	Ball & Seat Combo Small	4,10,11,12
V-HH5-3012	Handle Hardware Small	6,7,13,14,15
V-SWKIT1560	Swivel Kit 1" Small	1,3,16,17
V-SWKIT3012	Swivel Kit 1.5" Small	1a,3,16,17

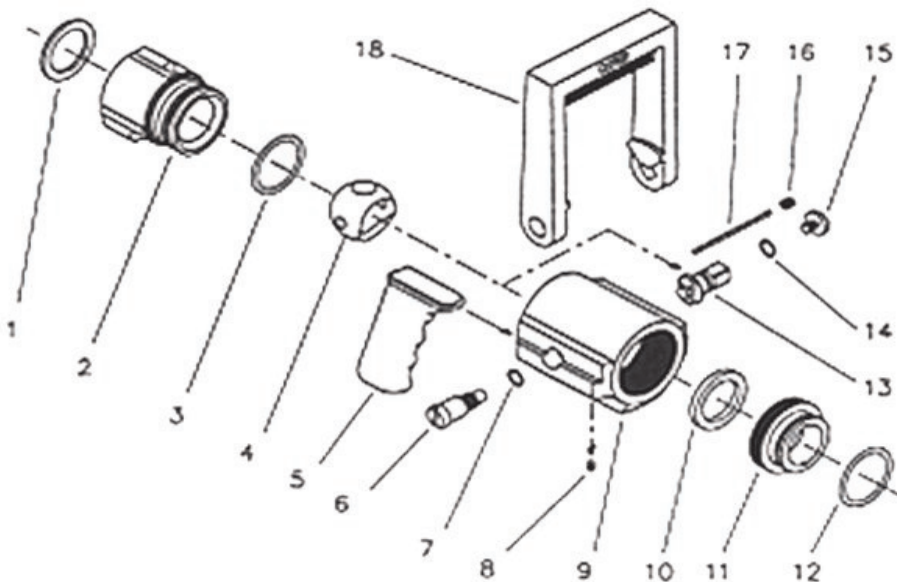


PLEASE BE RESPONSIBLE!
PLEASE BE CAREFUL!

THE USER OF THIS EQUIPMENT IS
PERSONALLY RESPONSIBLE FOR THE
FOLLOWING:

1. You need to know and understand that Fire-fighting and Emergency response is dangerous and proper training is needed.
2. You need to be physically fit and skillful in the use of any equipment that you may need to use.
3. You need to know that your equipment is in proper working order.
4. You need to know carelessness or negligence may result in injury or death.

PLEASE BE RESPONSIBLE!
PLEASE BE CAREFUL!



SHUTOFF USE:

- Open and close the valve slowly to reduce risk of water hammer.
- Pull the bail handle toward the swivel to OPEN the valve.
- Push the bail handle toward the tip of the nozzle to CLOSE the valve.
- Maximum Operating Pressure for VIPER Valves is 580 PSI

Maintenance:

- Test nozzle before putting into service.
- Clean nozzle by flushing with water after use.
- Use non-detergent soap to clean dirt from the exterior to reduce wear .
- Regularly check the bail handle screws that they are tight. If taken out use medium strength thread locker on the threads before reassembly.
- Periodically service your nozzle or have your fire equipment dealer service it.
- Normally serviced parts are the: Ball, Seat assembly, and the handle hardware (Ball locator screw, Actuator, Pan head cover).

LARGE VIPER VALVES

Part numbers ending in: 8020, 9520, 12250

VB9520 and VB9520-2.5 BOM			
REFERENCE	PART NAME	PART #	QUANTITY
1	1.5" GASKET	GASKET 15	1
1a	2.5" GASKET	GASKET 25	1
2	1.5" SWIVEL (LARGE)	V-1.5" SWIVEL-9520	1
2a	2.5" SWIVEL	V-2.5" SWIVEL-9520	1
3	SWIVEL O-RING	V-ORING-SW-9520	1
4	BALL	V-BALL-9520	1
5	PISTOL GRIP	V-PG15V	1
6	BALL LOCATOR (2 PIECES)	V-BALLOC-9520	1
7			
8	PISTOL GRIP SET PIN	V-SETPIN-PG	1
9	VALVE BODY	VLVBDY-9520	1
10	SEAT RETAINER (3 PIECES)	V-SEATRTNR-9520	1
11			
12			
13	BALL ACUATOR (2 PEICES)	V-BALLACT-9520	1
14			
15	PAN HEAD COVER	V-PANHEAD-9520	1
16	SWIVEL SET PIN	V-SETPIN-9520	1
17	BALL BEARINGS	V-BEARINGS-9520	32
18	HANDLE (BAIL)	V-HANDLE-9520	1

VB9520 and VB9520-2.5 AVAILABLE KITS		
KIT#	KIT Name	PARTS CONTAINED
VVRK-9520 (*)	Valve Repair Kit Lg.	1,1a,3,4,6,7,10,11,12,13,14,15,16,17,18
VBSC-9520	Ball & Seat Combo Lg.	4,10,11,12
V-HH5-9520	Handle Hardware Lg.	6,7,13,14,15
V-SWKIT9520	Swivel Kit 1" Lg.	1,3,16,17
V-SWKIT9520-2.5	Swivel Kit 1.5" Lg.	1a,3,16,17

SHUTOFF USE:

- Open and close the valve slowly to reduce risk of water hammer.
- Pull the bail handle toward the swivel to OPEN the valve.
- Push the bail handle toward the tip of the nozzle to CLOSE the valve.
- Maximum Operating Pressure for VIPER Valves is 580 PSI

Maintenance:

- Test nozzle before putting into service.
- Clean nozzle by flushing with water after use.
- Use non-detergent soap to clean dirt from the exterior to reduce wear.
- Regularly check the bail handle screws that they are tight. If taken out use medium strength thread locker on the threads before reassembly.
- Periodically service your nozzle or have your fire equipment dealer service it.
- Normally serviced parts are the: Ball, Seat assembly, and the handle hardware (Ball locator screw, Actuator, Pan head cover).

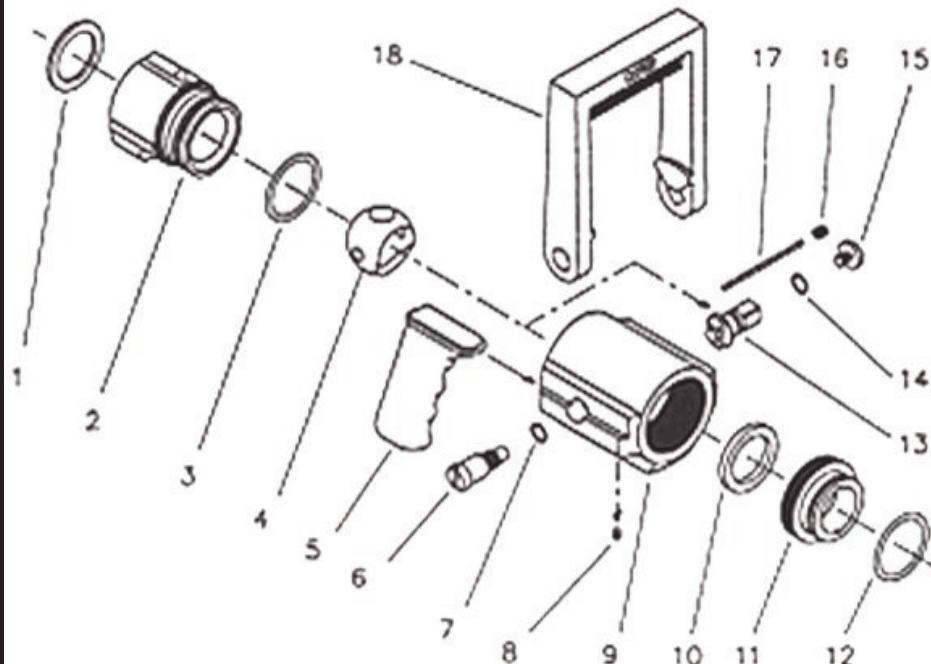


PLEASE BE RESPONSIBLE!
PLEASE BE CAREFUL!

THE USER OF THIS EQUIPMENT IS
PERSONALLY RESPONSIBLE FOR THE
FOLLOWING:

1. You need to know and understand that Fire-fighting and Emergency response is dangerous and proper training is needed.
2. You need to be physically fit and skillful in the use of any equipment that you may need to use.
3. You need to know that your equipment is in proper working order.
4. You need to know carelessness or negligence may result in injury or death.

PLEASE BE RESPONSIBLE!
PLEASE BE CAREFUL!





Nozzle Selling Basic Line of Questioning (page 1 of 2)

PRICE LIST (P.L.) WILL LIST ALL PRODUCTS AND CATALOG (CAT.) PAGES
THE P.L. CAN BE A GREAT REFERENCE TOOL ...

What size inlet (hose coupler) are you looking for?

3/4", 1", 1-1/2" (1-3/4"), or 2-1/2"? Note: 1-1/2" and 1-3/4" couplers are the same.

What threads do you use?

National Standard Hose (NST, NH)

or

National pipe straight hose (NPSH, IPT, NPT)

What type of nozzle would you like?

Select Gallonage, Constant Gallonage, Automatic, Foam, Smoothbore, or Small "BREAK- APART"

If:

Select Gallonage, What Flow rate and at what PSI (CAT. PAGES 4-7) (P.L. Page 1,2)

Constant Gallonage, What Flow rate and at what PSI (CAT. PAGES 8-9) (P.L. Page 3)

Automatic, What Flow rate or range and at what PSI (CAT. PAGES 10-11) (P.L. Page 3)

Foam, What Flow rate (CAT. PAGES 14-15) (P.L. Page 4)

Smoothbore Nozzle Tip, what orifice size or flow rate? Please note which valve, VB model, should go with each smoothbore tip)
(CAT. PAGES 20 & 22) (P.L. Page 6)

SMOOTH BORE THEORETICAL FLOW DATA/ GPM

PSI	3/16"	1/4"	3/8"	1/2"	5/8"	3/4"	7/8"	1 5/16"	1"	1 1/16"	1 1/8"	1 1/4"
40	6.5	11	27	48	73	107	143	166	189	212	239	295
50	7.5	13	31	54	82	119	160	186	211	237	267	329
60	8	14	32	57	89	129	176	202	230	259	291	359
80	9.3	16.6	37	66	103	149	203	233	265	299	336	415
100	10	18	43	75	116	168	227	262	298	335	377	465

VB1560 VB1560 VB1560 VB1560 VB1560 VB1560 (CAFS) VB1560 (CAFS)

**Suggested
VB
MODEL**

VB3012 VB3012 VB3012
VB9520 VB9520 VB9520 VB9520 VB9520 VB9520 VB9520 VB9520 VB9520
VB9520-2.5 VB9520-2.5 VB9520-2.5 VB9520-2.5 VB9520-2.5 VB9520-2.5 VB9520-2.5 VB9520-2.5 VB9520-2.5

OR

Small "BREAK-APART", continue to instructions on next page

MOST OF THESE PRODUCTS ARE ON PAGES 5 OF THE PRICE LIST
SMOOTH BORES ARE ON PAGE 6



Nozzle Selling Basic Line of Questioning (page 2 of 2)

Does customer want a Ball shutoff or build a 'Break-Apart' nozzle

Step 1 BALL SHUTOFF

What size inlet are they looking for?

(CAT. PAGES 16-17)

(P.L. Page 5)

1" (w/ 1" waterway) SBV10SS VB1560	1.5" (w/ 1" waterway) SBV15SS VB3012	1.5" (1.75") (w/ 1 3/8" waterway) VB9520NPG VB9520	2.5" with 1.5" outlet (w/ 1 3/8" waterway) VB9520NPG-2.5 VB9520-2.5
--	--	--	---

What threads do you use?

National Standard Hose (NST, NH)

or

National pipe straight hose (NPSH, IPT, NPT)

Step 2 NOZZLE TIP

For break apart or inexpensive nozzles, a nozzle tip can be added to a ball shutoff.

What Type of nozzle is preferred?

Dual Range Nozzle	(CAT. PAGE 18)	(P.L. Page 5)
Constant flow Nozzle	(CAT. PAGE 19)	(P.L. Page 5)
Smoothbore Nozzle	(CAT. PAGE 20)	(P.L. Page 6)
What GPM do they want? (For smoothbore sizes see the chart on page 44)		

MOST OF THESE PRODUCTS ARE ON PAGE 5 OF THE PRICE LIST.

HOSE COILERS:

What size hose are they going to roll?

MC40 rolls 1" & 1.5" hose

MC65 rolls 1.5" to 3" hose (this roller can also roll 1" hose with some guidance from the operator)

*** One mounting bracket (MB) is included with the MC40 and MC65

THMB trailer hitch mounting bracket is the most popular accessory for these mounts

MC80 rolls 4" -7" hose

***One each Tailboard Mount and Trailer Hitch Mount are included with each unit.

Extra mounting brackets can be ordered separately

(CAT. PAGE 25)

(P.L. Page 7)

TEL: 888-663-4966 sales@cssupplyinc.com FAX: 970-663-3878

ORDERING INFORMATION

- ORDERS:** Orders will be accepted by fax at 970-663-3878 or sales@cssupplyinc.com
- TERMS:** Net 30 Days, 1% discount for payment within 15 days of invoice date. Late Payments may result in product hold pre-pay status. Credit card payments are not eligible for the 1% discount within 15 days.
- DELIVERY:** F.O.B. Fort Collins, Colorado. All Shipments will be by UPS Ground.
Please advise if express shipment or special carrier is required.
- SHIPMENTS:** In-Stock items are shipped within 24-48 hours after receipt of order. We will contact you with expected delivery for any non-stock items.
Shipping Discrepancies must be reported within 10 days of delivery to assure accurate adjustment.
- RETURN POLICY:** Items may be returned for Credit or Exchange only.
Call 888-663-4966 for instructions and Returned Goods Authorization number (RGA).
Goods returned in new condition will be restocked and can be subject to a 15% restocking charge.
All returns must be properly packaged to avoid any damage to item(s). If items are damaged upon receipt, an appropriate amount will be deducted from your credit. Items must be in like new condition to receive full credit.
Any item permanently marked with your identification is NOT returnable.
- REPAIR POLICY:** Call 888-663-4966 for instructions and Returned Goods Authorization number (RGA).
Enclose a note explaining the problem and any other pertinent information.
All effort will be made to repair the item or an equivalent replacement will be made.
Defective items will be fixed according to the warranty policy.
Charges for repair and parts will be issued accordingly.
- THREADS:** NST or NPSH threads are available on most items.
Special threads may be available for a minimum quantity of ten (10) of each type.
- CARRIER:** If you designate a carrier other than UPS, you will be responsible for paying for all the items shipped even if your carrier loses some of it. Be sure to insure all items through your carrier.
Carrier designation can only be done on freight collect shipments.

WE ACCEPT – Visa, MasterCard and American Express

LIMITED WARRANTY FOR C&S PRODUCTS

C&S Supply, Inc. and its manufacturers warrant their products to the original purchaser or any person to whom the product is transferred, that our product is free of defects in material and workmanship for five (5) years commencing from the date of purchase.

This warranty is limited to repairing or replacing the defective product. In the event that the defect is found to be attributable to C&S, the product will either be repaired or replaced, at the discretion of the company, at no cost to the customer.

To qualify for this warranty, the product must be returned to the Company, shipping prepaid, proof of purchase may be required, and within a reasonable time after discovery of the defect.

The company disclaims any implied warranties of merchantability or of fitness for any particular purpose. No warranties will apply if the product is in any way altered or modified after delivery by the company.



888-663-4966

3842 Redman Dr. Fort Collins, CO 80524

Phone: 970-663-4966 Fax: 970-663-3878

E-mail: sales@CSsupplyinc.com

www.CSsupplyinc.com

