

Viper Automatic (FT) Series Nozzles

Automatic: Three settings 75PSI, 100 PSI,150PSI

Flush without shutting down

Swivel: NST or NPSH except on 2 1/2" models

Wts: 3.5lbs(1550), 4.5lbs(2510/5016), 6.5lbs (8020), 7.3lbs(8020-2 1/2"/12250)

Lengths: 9.25"(1550), 9.84"(2510/5016), 11.2"(8020), 13"(8020-2 1/2"/12250)

Made of extruded E-Lite alloy & Hard anodized

All Viper models are individually tested

(Low Pressure also available on most models)



STYLE	NOZZLE PRES-SURE (psi)	NOZZLE FLOW (gpm)	STREAM SETTING	EFFECTIVE REACH
FT1550	75	15	SS	69
	100	23	SS	82
	150	50	SS	112
FT2510	75	25	SS	121
	100	38	SS	131
	150	100	SS	141
FT5016	75	50	SS	128
	100	70	SS	138
	150	160	SS	151
FT8020	75	80	SS	131
	100	145	SS	144
	150	200	SS	161

FT5016-LP	75	70	SS	131
	100	110	SS	141
FT8020-LP	75	200	SS	138
	100	265	SS	161

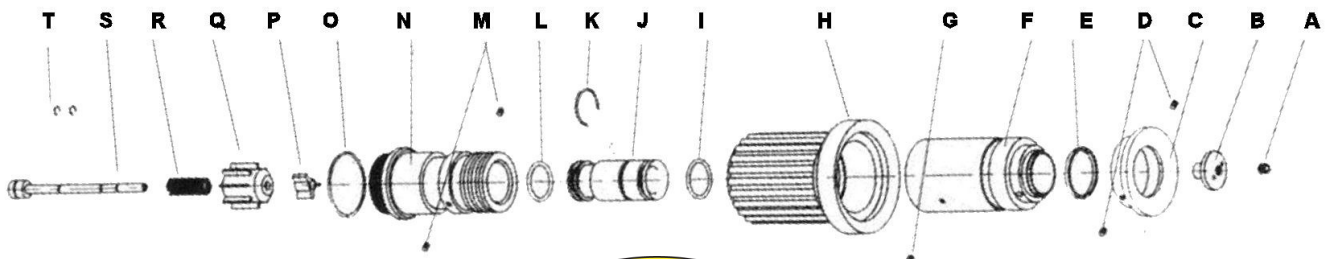


VIPER FT1550



CG1550 AND FT1550 BOM			
REFERENCE	PART NAME	PART #	QUANTITY
A	SPINDLE SET PIN	V-SETPIN-3012	1
B	SPINDLE HEAD	V-SPNDLHD-1560	1
C	RETAINER RING	V-RTNRRNG-1550	1
D	RET. RING SET PIN	V-SETPIN-RR-1560	2
E	SPINNING TEETH	V-TEETH-1560	1
F	OUTER BARREL	V-OUTRBRRL-1550	1
G	SET PIN	V-SETPIN-RR-1560	1
H	BUMPER	V- BUMPER-1550	1
I	INNER BARREL O-RING	V-ORING-IB-1550	1
J	INNER BARREL	V-INNERBARREL-1550	1
K	TRUARC	V-TRUARC-1550	1
L	INNERBARREL O-RING	V-ORING-IB-1550	1
M	SET PIN	V-SETPIN-RR-1560	2
N	NOZZLE BARREL	V-NZLBARREL-1550	1
O	NOZZLE BARREL O-RING	V-ORING-3012	1
P	SPINDLE SHAFT GUIDE	V-SPNDLSHFT-1550	1
Q	SPINDLE SHAFT BASE		
S	SPINDLE SHAFT		
T	SMALL TRUARCS X 2		
R	FT1550 SPRING	V-SPRING-FT1550	1

FT1550 TIP



253-C 42nd Street SW Loveland CO 80537
 Phone: 970-663-4966 - Sales@cssupplyinc.com - www.CSSupplyinc.com

(VALVE PORTION) VB1560 and VB3012 BOM			
REFERENCE	PART NAME	PART #	QUANTITY
1	1" GASKET	GASKET_1	1
1a	1.5" GASKET	GASKET_15	1
2	1" SWIVEL	V-1" SWIVEL	1
2a	1.5" SWIVEL	V-1.5" SWIVEL	1
3	SWIVEL O-RING	V-ORING-SW-3012	1
4	BALL	V-BALL-3012	1
5	PISTOL GRIP	V-PG15V	1
6	BALL LOCATOR (2 PIECES)	V-BALLOC-3012	1
7			
8	PISTOL GRIP SET PIN	V-SETPIN-3012	1
9	VALVE BODY	VLVBDY-3012	1
10	SEAT RETAINER (3 PIECES)	V-SEATRTNR-3012	1
11			
12			
13	BALL ACUATOR (2 PEICES)	V-BALLACT-3012	1
14			
15	PAN HEAD COVER	V-PANHEAD-3012	1
16	SWIVEL SET PIN	V-SETPIN-3012	1
17	BALL BEARINGS	V-BEARINGS-3012	32
18	HANDLE (BAIL)	V-HANDLE-3012	1

FT1550 AVAILABLE KITS		
KIT#	KIT Name	PARTS CONTAINED
VNRK-1550	VIPER NOZZLE REPAIR KIT FT/CG1550	A,B,C,D,E,G,H,I,K,L,M,O,P,R,S,T 1,3,4,5,6,7,8,10,11,12,13,14,15,16,17,18
VVRK-3012	Valve Repair Kit Small	1,1a,3,4,6,7,10,11,12,13,14,15,16,17,18
VBSC-3012	Ball & Seat Combo Small	4,10,11,12
V-HH5-3012	Handle Hardware Small	6,7,13,14,15
V-SWKIT3012	Swivel Kit 1" & 1.5" Small	1,1a,3,16,17

SHUTOFF USE:

- Open and close the valve slowly to reduce risk of water hammer.
- Pull the bail handle toward the swivel to OPEN the valve.
- Push the bail handle toward the tip of the nozzle to CLOSE the valve.

TIP USE:

- The flow is in gallons per minute at 75psi, 100 psi, and 150psi
- Flush setting is made to discharge obstructions from the nozzle without shutting down flow. If object doesn't flush automatically twist the nozzle to fog position.
- Rotate the rubber bumper on the end to select spray pattern.

Maintenance:

- Test nozzle before putting into service.
- Clean nozzle by flushing with water after use.
- Use non-detergent soap to clean dirt from the exterior to reduce wear .
- Regularly check the bail handle screws that they are tight. If taken out use medium thread locker on the



**PLEASE BE RESPONSIBLE!
PLEASE BE CAREFUL!**

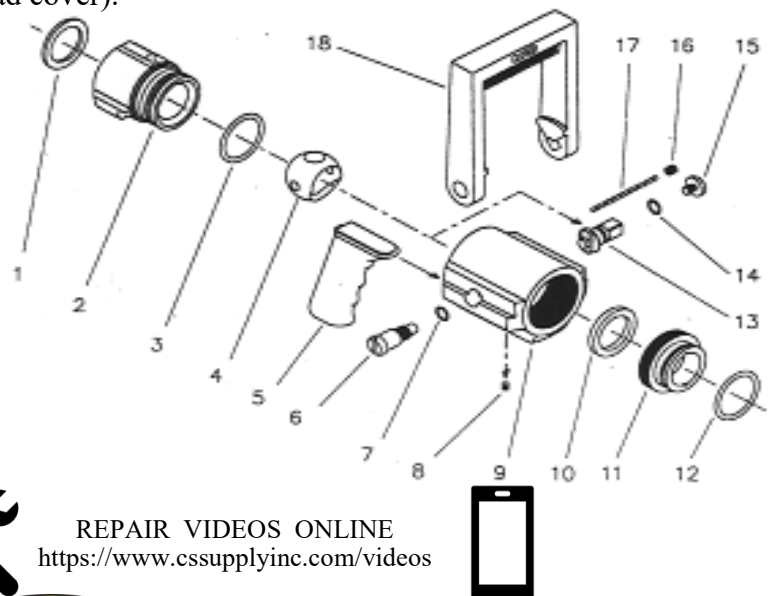
THE USER OF THIS EQUIPMENT IS PERSONALLY RESPONSIBLE FOR THE FOLLOWING:

1. You need to know and understand that Fire-fighting and Emergency response is dangerous and proper training is needed.
2. You need to be physically fit and skillful in the use of any equipment that you may need to use.
3. You need to know that your equipment is in proper working order.
4. You need to know carelessness or negligence may result in injury or death.

**PLEASE BE RESPONSIBLE!
PLEASE BE CAREFUL!**

threads before reassembly.

- Periodically service your nozzle or have your fire equipment dealer service it.
- Normally serviced parts are the: Ball, Seat assembly, Spinning teeth, and the handle hardware (Ball locator screw, Actuator, Pan head cover).



REPAIR VIDEOS ONLINE
<https://www.cssupplyinc.com/videos>

