

# VIPER BLUE DEVIL

High performance nozzles with select flows



BlueDevil®

BD550 (replaced BDS752)

5-10-25-50 GPM @ 100PSI

1" Swivel



Wt: 3.6 lbs. Length: 8.5"

BD1560

15-30-50-60 GPM @ 100PSI

1" Swivel



Wt: 3.6 lbs. Length: 8.5"

## Features and Specifications

- NFPA 1964 compliant (EN 15182-4 TYPE 3 certified)
- 90 degree rotation from 30 degree fog to straight stream (one twist of the hand)
- Raised lug indicators on the selector and fog barrels for easier pattern and flow identification
- No teeth to break - Rylostatic teeth in the nozzle head to break up the water but not cause fingers in the stream, eliminating the need for spinning teeth or traditional fixed teeth.
- Metal ball with front and rear seals to work under higher pressures (max 580psi)
- Deeper ribs in selector ring for better grip with gloved hands
- 4 and 5 gallonage selection ring, without pattern change
- FLUSH without shutting down
- Constant flow through fog and straight stream
- Standard operating pressure@ 100 psi (75 and 50psi operating pressures available as well)
- Swivel inlet NST or NPSH threads (2.5" NST ONLY)

BD3012

30-60-95-125 GPM @ 100PSI

1.5" Swivel



Wt: 4.2 lbs. Length: 9.88"

BD3015

30-60-95-125-150 GPM @ 100PSI

1.5" Swivel



Wt: 4.2 lbs. Length: 9.88"

BD7515

75-100-125-150 GPM @ 100PSI

1.5" Swivel



Wt: 4.2 lbs. Length: 9.88"

CS Supply

QUALITY AFFORDABLE PRODUCTS

3842 Redman Dr. Fort Collins CO 80524

Phone: 888-663-4966 - Fax: 970-663-4966 - www.cssupplyinc.com

# VIPER BLUE DEVIL

High performance nozzles with select flows



BlueDevil<sup>®</sup>

BD9520 1.5"

95-125-150-200 GPM @ 100PSI

1.5" Swivel



Wt: 6.8 lbs. Length: 11"

BD9520 2.5"

95-125-150-200 GPM @ 100PSI

2.5" Swivel



Wt: 7.8 lbs. Length:



BD12250 1.5"

125-150-200-250 GPM @ 100PSI

1.5" Swivel



Wt: 6.8lbs. Length: 11"

BD12250 2.5"

125-150-200-250 GPM @ 100PSI

2.5" Swivel



Wt: 7.8 lbs. Length: 12.75"

CSSupply

QUALITY AFFORDABLE PRODUCTS

3842 Redman Dr. Fort Collins CO 80524

Phone: 888-663-4966 - Fax: 970-663-4966 - www.cssupplyinc.com

**BD550/1560 and BD3012/7515/3015 BOM (VALVE)**

REFERENCE	PART NAME	PART #	QUANTITY
1	1" GASKET	GASKET_1	1
1a	1.5" GASKET	GASKET_15	1
2	1" SWIVEL	V-1" SWIVEL	1
2a	1.5" SWIVEL	V-1.5" SWIVEL	1
3	SWIVEL O-RING	V-ORING-SW-3012	1
4	BALL	V-BALL-3012	1
5	PISTOL GRIP	V-PG15V	1
6	BALL LOCATOR (2 PIECES)	V-BALLLOC-3012	1
7			
8	PISTOL GRIP SET PIN	V-SETPIN-3012	1
9	VALVE BODY	VLVBDY-BD3012	1
10	SEAT RETAINER (3 PIECES)	V-SEATRTNR-3012	1
11			
12			
13	BALL ACUATOR (2 PEICES)	V-BALLACT-3012	1
14			
15	PAN HEAD COVER	V-PANHEAD-3012	1
16	SWIVEL SET PIN	V-SETPIN-3012	1
17	BALL BEARINGS	V-BEARINGS-3012	32
18	HANDLE (BAIL)	V-HANDLE-BD3012	1

**SHUTOFF USE:**

- Open and close the valve slowly to reduce risk of water hammer.
- Pull the bail handle toward the swivel to OPEN the valve.
- Push the bail handle toward the tip of the nozzle to CLOSE the valve.

**TIP USE:**

- The Gallonage selector ring indicates the flow in gallons per minute at 100 psi.
- Flush setting is made to discharge obstructions from the nozzle while flowing water.
- Rotate the rubber bumper on the end to select spray pattern.

**VB1560 and VB3012 AVAILABLE KITS**

KIT#	KIT Name	PARTS CONTAINED
VVRK-3012	Valve Repair Kit Small	1,1a,3,4,6,7,10,11,12,13,14,15,16,17,18
VBSC-3012	Ball & Seat Combo Small	4,10,11,12
V-HH5-3012	Handle Hardware Small	6,7,13,14,15
V-SWKIT1560	Swivel Kit 1" Small	1,3,16,17
V-SWKIT3012	Swivel Kit 1.5" Small	1a,3,16,17

**Maintenance:**

- Test nozzle before putting into service.
- Clean nozzle by flushing with water after use.



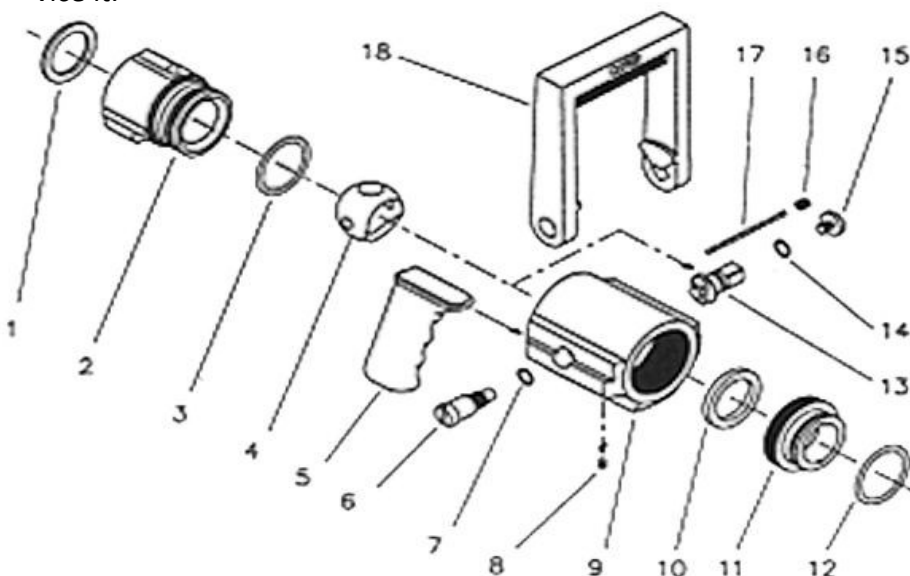
**PLEASE BE RESPONSIBLE!**

**PLEASE BE CAREFUL!**

THE USER OF THIS EQUIPMENT IS PERSONALLY RESPONSIBLE FOR THE FOLLOWING:

1. You need to know and understand that Fire-fighting and Emergency response is dangerous and proper training is needed.
2. You need to be physically fit and skillful in the use of any equipment that you may need to use.

- Use non-detergent soap to clean dirt from the exterior to reduce wear .
- Regularly check the bail handle screws that they are tight. If taken out use medium strength thread locker on the threads before reassembly.
- Periodically service your nozzle or have your fire equipment dealer service it.



3842 Redman Dr. Fort Collins CO 80524

Phone: 888-663-4966 - Fax:970-663-4966 - www.cssupplyinc.com

**BD9520 and BD12250 BOM (VALVE)**

REFERENCE	PART NAME	PART #	QUANTITY
1	1.5" GASKET	GASKET_15	1
1a	2.5" GASKET	GASKET_25	1
2	1.5" SWIVEL	V-1.5" SWIVEL-9520	1
2a	2.5" SWIVEL	V-2.5" SWIVEL-9520	1
3	SWIVEL O-RING	V-ORING-SW-3012	1
4	BALL	V-BALL-9520	1
5	PISTOL GRIP	V-PG15V	1
6	BALL LOCATOR (2 PIECES)	V-BALLLOC-9520	1
7			
8			
9	PISTOL GRIP SET PIN	V-SETPIN-3012	1
10	VALVE BODY	VLVBDY-BD9520	1
11			
12			
13	SEAT RETAINER (3 PIECES)	V-SEATRTNR-9520	1
14			
15	BALL ACUATOR (2 PEICES)	V-BALLACT-9520	1
16	PAN HEAD COVER	V-PANHEAD-9520	1
17	SWIVEL SET PIN	V-SETPIN-9520	1
18	BALL BEARINGS	V-BEARINGS-9520	32
19	HANDLE (BAIL)	V-HANDLE-BD9520	1

**SHUTOFF USE:**

- Open and close the valve slowly to reduce risk of water hammer.
- Pull the bail handle toward the swivel to OPEN the valve.
- Push the bail handle toward the tip of the nozzle to CLOSE the valve.

**TIP USE:**

- The Gallonage selector ring indicates the flow in gallons per minute at 100 psi.
- Flush setting is made to discharge obstructions from the nozzle while flowing water.
- Rotate the rubber bumper on the end to select spray pattern.

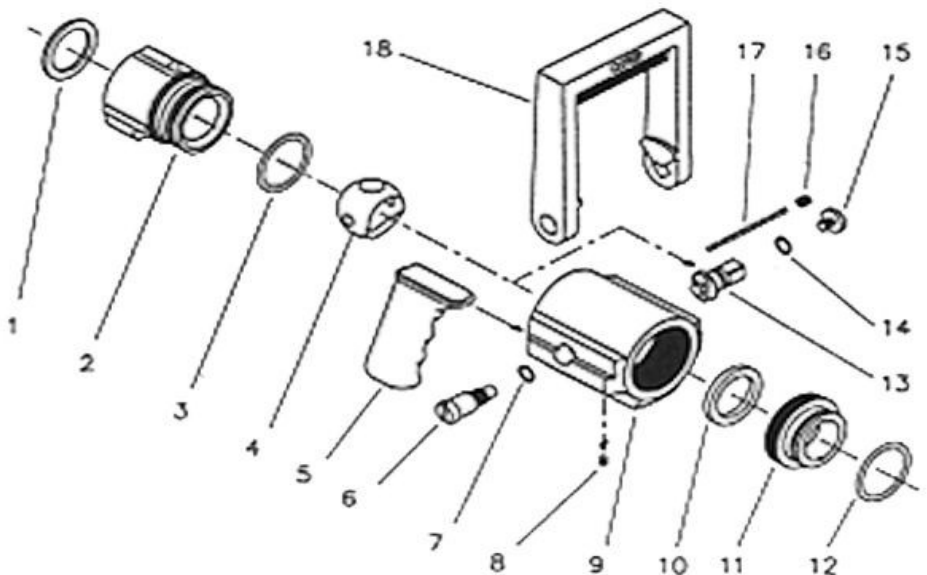
**VB1560 and VB3012 AVAILABLE KITS**

KIT#	KIT Name	PARTS CONTAINED
VVRK-3012	Valve Repair Kit Small	1,1a,3,4,6,7,10,11,12,13,14,15,16,17,18
VBSC-3012	Ball & Seat Combo Small	4,10,11,12
V-HH5-3012	Handle Hardware Small	6,7,13,14,15
V-SWKIT1560	Swivel Kit 1" Small	1,3,16,17
V-SWKIT3012	Swivel Kit 1.5" Small	1a,3,16,17

**Maintenance:**

- Test nozzle before putting into service.
- Clean nozzle by flushing with water after use.

- Use non-detergent soap to clean dirt from the exterior to reduce wear .
- Regularly check the bail handle screws that they are tight. If taken out use medium strength thread locker on the threads before reassembly.
- Periodically service your nozzle or have your fire equipment dealer service it.



**PLEASE BE RESPONSIBLE!**

**PLEASE BE CAREFUL!**

THE USER OF THIS EQUIPMENT IS PERSONALLY RESPONSIBLE FOR THE FOLLOWING:

1. You need to know and understand that Fire-fighting and Emergency response is dangerous and proper training is needed.
2. You need to be physically fit and skillful in the use of any equipment that you may need to use.



3842 Redman Dr. Fort Collins CO 80524

Phone: 888-663-4966 - Fax:970-663-4966 - www.cssupplyinc.com